

OKLAHOMA DEPARTMENT OF TRANSPORTATION					
FED. ROAD DIST. NO.	STATE	JOB RECD. NO.	FISCAL YEAR	SHEET NO.	TOTAL SHEETS
6	OKLA.				
DESCRIPTION		REVISIONS		DATE	

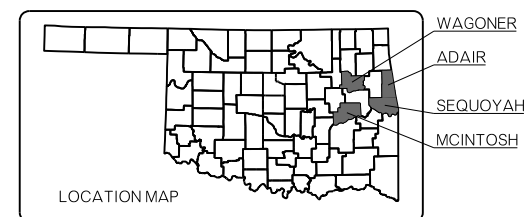
STATE OF OKLAHOMA  
DEPARTMENT OF TRANSPORTATION

PLAN OF PROPOSED  
**STATE HIGHWAY**

PROJECT NO. STP-273F(043)3B  
DIVISION 1 PREVENTIVE MAINTENANCE JOINT SEAL/REPAIR  
STATE JOB NO. 33216(04)

INDEX OF SHEETS

SHEET NUMBER	SHEET DESCRIPTION
0001	TITLE SHEET
AB01	GENERAL NOTES AND SUMMARY OF PAY QUANTITIES (BRIDGE)
AT01	GENERAL NOTES AND SUMMARY OF PAY QUANTITIES (TRAFFIC)
B001	GENERAL PLAN AND TYPICAL SECTION (BRIDGE "A")
B002	GENERAL PLAN AND TYPICAL SECTION (BRIDGE "B")
B003	GENERAL PLAN AND TYPICAL SECTION (BRIDGE "C")
B004	GENERAL PLAN AND TYPICAL SECTION (BRIDGE "D")
B005	GENERAL PLAN AND TYPICAL SECTION (BRIDGE "E")
T001	TRAFFIC CONTROL DETAIL SH-51 EB OVER VERDIGRIS RIVER BRIDGE 'A'
T002	TRAFFIC CONTROL DETAIL FLAGGING OPERATION BRIDGES 'B', 'D', & 'E'
T003-T006	TRAFFIC CONTROL DETAIL US-69 OVER SH-9 BRIDGE 'C'



TRAFFIC DESIGN

PROJECT ENGINEER: J. SHORT  
SQUAD SUPERVISOR: S. WILLIAMS

BRIDGE DESIGN

SQUAD SUPERVISOR: R. HENSLEY  
SQUAD MEMBERS: T. ELDRIDGE, P. GAFFORD, B. JONES, D. NASH, M. WANZER

ENGINEERING MANAGER: P. DEFRANCO, PE  
ENGINEER: C. OSBORNE, PE  
ENGINEER: L. WINN, EIT

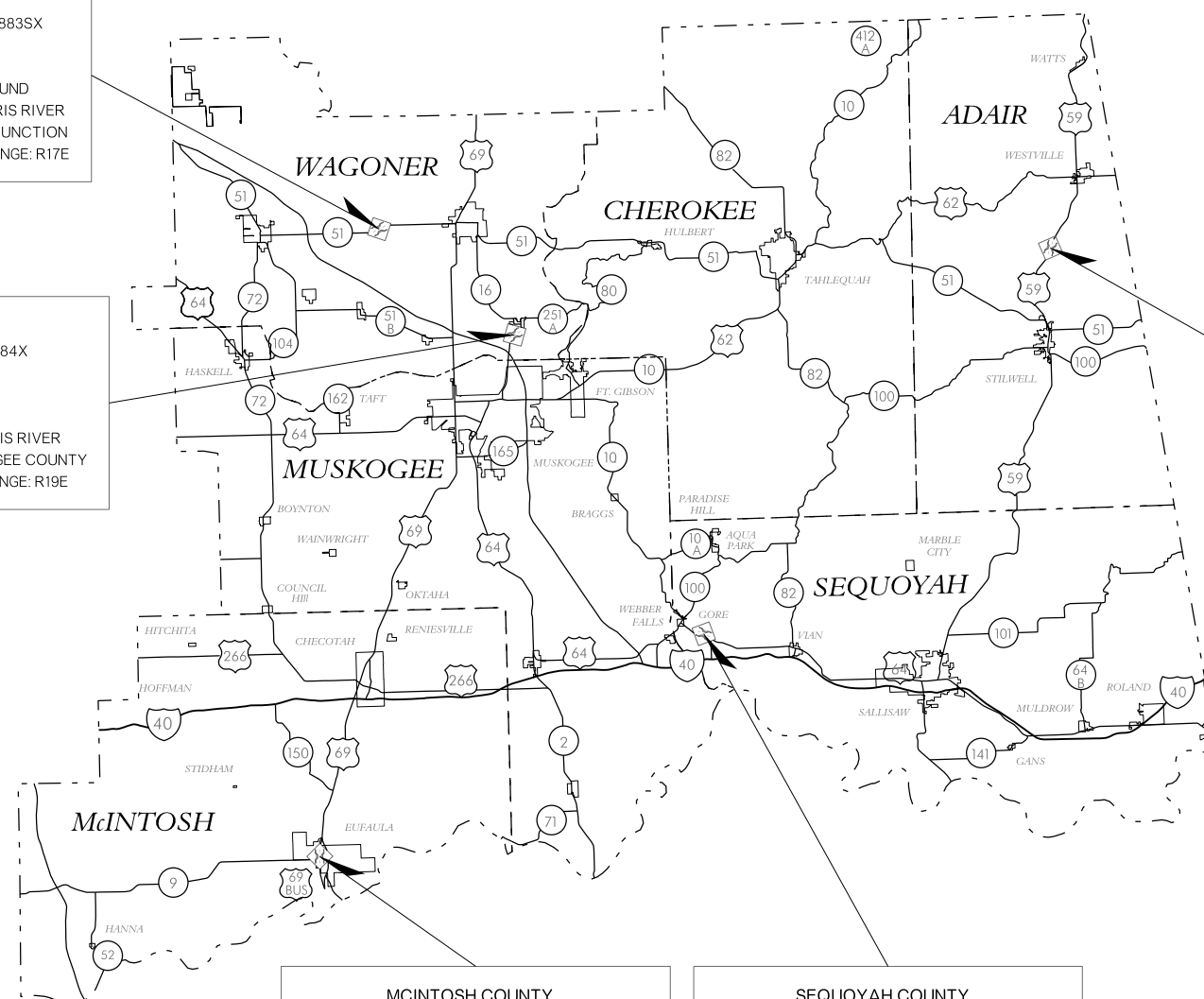
**WAGONER COUNTY**  
BRIDGE "A" - LOCATION NO. 7314 0883SX  
CONTROL SECTION NO. 51-73-14  
NBI NO. 28740  
FACILITY CARRIED: SH-51 EASTBOUND  
FEATURES INTERSECTED: VERDIGRIS RIVER  
LOCATION: 9.2 MILES E. OF SH-72 JUNCTION  
SECTION: 16 TOWNSHIP: T17N RANGE: R17E

**WAGONER COUNTY**  
BRIDGE "B" - LOCATION NO. 7323 0184X  
CONTROL SECTION NO. 16-73-23  
NBI NO. 17962  
FACILITY CARRIED: SH-16  
FEATURES INTERSECTED: VERDIGRIS RIVER  
LOCATION: 1.9 MILES N. OF MUSKOGEE COUNTY  
SECTION: 29 TOWNSHIP: T16N RANGE: R19E

**ADAIR COUNTY**  
BRIDGE "E" - LOCATION NO. 0104 0666X  
CONTROL SECTION NO. 59-01-04  
NBI NO. 19999  
FACILITY CARRIED: US-59  
FEATURES INTERSECTED: BARREN FORK CREEK  
LOCATION: 6.6 MILES N. OF SH-51 JUNCTION  
SECTION: 27 TOWNSHIP: T17N RANGE: R25E

**MCINTOSH COUNTY**  
BRIDGE "C" - LOCATION NO. 4603 0527X  
CONTROL SECTION NO. 69-46-03  
NBI NO. 26658  
FACILITY CARRIED: US-69  
FEATURES INTERSECTED: SH-9 UNDER  
LOCATION: 5.3 MILES N. OF PITTSBURG COUNTY  
SECTION: 34 TOWNSHIP: T10N RANGE: R16E

**SEQUOYAH COUNTY**  
BRIDGE "D" - LOCATION NO. 6829 0200X  
CONTROL SECTION NO. 10-68-29  
NBI NO. 14482  
FACILITY CARRIED: SH-10  
FEATURES INTERSECTED: DEEP BRANCH CREEK  
LOCATION: 2.2 MILES E. OF MUSKOGEE COUNTY  
SECTION: 16 TOWNSHIP: T12N RANGE: R21E



CONVENTIONAL SYMBOLS

- PROPOSED ROAD
- RAILROADS
- RANGE & TOWNSHIP
- SECTION LINES
- QUARTER SECTION LINES
- x FENCES
- - - GROUND LINE
- - - EXISTING ROADS
- +2% -2% BASE LINE
- GRADE LINES
- TELEPHONE & TELEGRAPH
- POWER LINES
- BUILDINGS
- OILWELL
- DRAINAGE STRUCTURES - IN PLACE
- DRAINAGE STRUCTURES - NEW
- PRES. R/W RIGHT-OF-WAY LINES - EXISTING
- R/W RIGHT-OF-WAY LINES - NEW
- /// CONTROLLED ACCESS
- R/W RIGHT-OF-WAY FENCE

STANDARDS TO BE INCLUDED

ROADWAY	TRAFFIC	
LECS-4-1	TCS1-1-01	TCS10-1-00
	TCS2-1-00	TCS11-1-01
	TCS3-1-01	TCS14-1-00
	TCS4-1-01	TCS18-1-01
	TCS5-1-00	TCS19-1-01
	TCS6-1-02	TCS20-1-00
	TCS7-1-02	
	TCS8-1-00	
	TCS9-1-01	

PREPARED BY:  
OKLAHOMA DEPARTMENT OF TRANSPORTATION  
BRIDGE DESIGN DIVISION  
*Patty F. DeFranco*  
PATTY F. DEFRANCO, P.E.  
OKLA. REG. NO. 20916  
DATE: 7/13/2017

OKLAHOMA DEPARTMENT OF TRANSPORTATION	DEPARTMENT OF TRANSPORTATION FEDERAL HIGHWAY ADMINISTRATION
DATE APPROVED _____ BY _____ CHIEF ENGINEER	DATE APPROVED _____ BY _____ DIVISION ADMINISTRATOR
SWO _____ COUNTY MULTIPLE	PROJECT NO. STP-273F(043)3B HIGHWAY MULTIPLE SHEET NO. 0001

2009 OKLAHOMA STANDARD SPECIFICATIONS FOR HIGHWAY CONSTRUCTION GOVERN, APPROVED BY THE U.S. DEPARTMENT OF TRANSPORTATION, FEDERAL HIGHWAY ADMINISTRATION, JANUARY 4, 2010.

P.E. NO. : 33216(01)

REVISIONS		
REV. NO.	DESCRIPTION	DATE
△	ADD ENVIRO NOTES	8/14/17

## GENERAL NOTES

### SPECIFICATIONS:

COMPLY WITH THE REQUIREMENTS OF THE 2009 STANDARD SPECIFICATIONS FOR HIGHWAY CONSTRUCTION, EXCEPT AS MODIFIED BY THE PLANS AND SPECIAL PROVISIONS.

### PLANS:

CONSTRUCTION PLANS FOR THE EXISTING STRUCTURES MAY BE OBTAINED FROM OFFICE SERVICES DIVISION OF THE OKLAHOMA DEPARTMENT OF TRANSPORTATION.

OFFICE SERVICES DIVISION  
OKLAHOMA DEPARTMENT OF TRANSPORTATION  
200 NE 21ST STREET  
OKLAHOMA CITY, OKLAHOMA 73105

ASK FOR:  
BRIDGE "A": FAP-STPY-173B(019), SH-51 EASTBOUND OVER VERDIGRIS RIVER IN WAGONER COUNTY  
BRIDGE "B": SBR-173C(139)SB, SH-16 OVER VERDIGRIS RIVER IN WAGONER COUNTY  
BRIDGE "C": FAP-NHY-13N(022), US-69 OVER SH-9 IN MCINTOSH COUNTY  
BRIDGE "D": SBR-168C(210)SB, SH-10 OVER DEEP BRANCH CREEK IN SEQUOYAH COUNTY  
BRIDGE "E": FAP-BRF-329(54), US-59 OVER BARREN FORK CREEK IN ADAIR COUNTY

### VERIFICATION OF EXISTING CONDITIONS:

ALL DIMENSIONS OF THE EXISTING BRIDGE COMPONENTS SHOWN ON THE PLANS ARE APPROXIMATE. THE CONTRACTOR SHALL VERIFY ALL DIMENSIONS NECESSARY TO CONSTRUCT THE NEW MATERIAL AND SHALL BE SOLELY RESPONSIBLE FOR THE ACCURACY THEREOF.

BIDDERS SHALL FULLY INFORM THEMSELVES OF THE NATURE OF THE WORK AND CONDITIONS UNDER WHICH IT WILL BE PERFORMED. THE CONTRACTOR SHALL ADOPT METHODS CONSISTENT WITH GOOD CONSTRUCTION PRACTICE AND SHALL TAKE ALL NECESSARY PRECAUTIONS TO PREVENT DAMAGE TO ANY EXISTING BRIDGE STRUCTURE OR ROADWAY. ANY DAMAGE TO THE BRIDGE STRUCTURE OR ROADWAY DUE TO THE CONTRACTOR'S NEGLIGENCE SHALL BE REPAIRED AT THE CONTRACTOR'S EXPENSE, TO THE SATISFACTION OF THE ENGINEER.

### REMOVED MATERIAL:

ALL MATERIAL AND DEBRIS REMOVED DURING THIS PROJECT SHALL BECOME THE PROPERTY OF THE CONTRACTOR AND SHALL BE DISPOSED OF IN A MANNER APPROVED BY THE ENGINEER.

### CLEANING BRIDGE SEATS AND PIER CAPS:

ALL BRIDGE SEATS AND PIER CAPS SHALL BE SWEEPED CLEAN OF ALL DEBRIS. ALL COSTS FOR CLEANING THE BRIDGE SEATS AND PIER CAPS SHALL BE PAID FOR IN OTHER ITEMS OF WORK.

### LANE CLOSURE:

THE ENGINEER RESERVES THE RIGHT TO PROHIBIT LANE CLOSURES DURING HOLIDAYS OR SPECIAL EVENTS.

### CLEANING OF DECK DRAINS AND DRAINS AT END OF BRIDGE:

ALL PARAPET/RAIL OPENINGS, DECK DRAINS AND DRAINS AT THE ENDS OF BRIDGE SHALL BE CHECKED FOR FUNCTIONALITY AND CLEARED OF ALL DEBRIS AS NEEDED TO ENSURE THAT WATER DRAINS FROM THE BRIDGE NORMALLY. THE METHOD FOR CLEANING THE DRAINS SHALL BE APPROVED BY THE ENGINEER AND SHALL BE PAID FOR IN OTHER ITEMS OF WORK.

### GOOD-HOUSEKEEPING REQUIREMENT:

MATERIAL STORAGE, CHEMICAL STORAGE, TRASH, SANITARY FACILITIES, ETC. SHOULD BE LOCATED NO CLOSER THAN 50 FEET FROM THE BANK OF ANY WATERS IN ORDER TO PROTECT WATER QUALITY. DEBRIS SHALL NOT BE BURIED WITHIN LIMITS OF RIGHT-OF-WAY.

## PAY ITEM NOTES

### (1) DECK AREA SEALED (FLOODCOATS) (BRIDGES "A", "B", "C", "D" & "E")

A FLOODCOAT DECK SEALANT SHALL BE APPLIED TO THE DRIVING SURFACE OF THE BRIDGE DECK, APPROACH SLABS AND THE VERTICAL FACES OF THE PARAPETS UP TO 1'-0" ABOVE THE BRIDGE DECK AT THE BRIDGE LOCATIONS LISTED. THE CONTRACTOR MUST PROTECT ALL TRAFFIC STRIPING FROM THE FLOODCOAT DECK SEALANT. ANY TRAFFIC STRIPING RENDERED INEFFECTIVE OR DAMAGED DURING THE FLOODCOAT SEALANT APPLICATION SHALL BE REPLACED AT THE CONTRACTOR'S EXPENSE, TO THE SATISFACTION OF THE ENGINEER.

THE CONTRACTOR MUST PREVENT THE FLOODCOAT DECK SEALANT FROM PENETRATING ANY JOINT THAT HAS BEEN SEALED WITH SILICONE. IF FLOODCOAT DECK SEALANT PENETRATES ANY SILICONE JOINT, THE CONTRACTOR, AT HIS OWN EXPENSE, WILL BE REQUIRED TO:

- AFTER BULK CURE, REMOVE ALL FLOODCOAT DECK SEALANT FROM THESE JOINTS
- REMOVE AND REPLACE THE SILICONE JOINT SEALANT

THE APPLICATION OF THE FLOODCOAT SHALL BE IN ACCORDANCE WITH SECTION 523.04E OF THE STANDARD SPECIFICATION, AND SHALL BE PERFORMED ONLY AFTER ALL OTHER WORK IS COMPLETE.

ALL COSTS, INCLUDING LABOR, EQUIPMENT, MATERIAL AND INCIDENTALS NECESSARY TO COMPLETE THE WORK DESCRIBED ABOVE AND AS SHOWN IN THE PLANS SHALL BE INCLUDED IN THE UNIT PRICE BID PER SQUARE YARD OF "DECK AREA SEALED (FLOODCOATS)".

### (2) REHABILITATED CONSTRUCTION JOINT SAW AND SEAL (BRIDGE "C")

SEAL EXISTING CONSTRUCTION JOINTS WITH BACKER ROD AND RAPID CURE JOINT SEALANT PLACED IN ACCORDANCE WITH SECTION 415 AND SUBSECTION 701.08G(1) OF THE STANDARD SPECIFICATIONS FOR HIGHWAY CONSTRUCTION AND AS SHOWN IN THE PLANS.

THE CONTRACTOR SHALL TAKE CARE NOT TO CUT INTO EXISTING DECK REINFORCING OR STRUCTURAL STEEL, UNLESS IT IS SPECIFICALLY REQUESTED BY THE PLANS. ANY DAMAGE TO THE REINFORCING, EXISTING BEAMS, COVER PLATES, SHEAR CONNECTORS OR STRUCTURAL BRACING DUE TO THE CONTRACTOR'S NEGLIGENCE SHALL BE REPAIRED AT THE CONTRACTOR'S EXPENSE, TO THE SATISFACTION OF THE ENGINEER.

ALL COSTS INCLUDING LABOR, EQUIPMENT, MATERIAL, AND INCIDENTALS NECESSARY TO COMPLETE THE WORK AS SHOWN IN THE PLANS SHALL BE INCLUDED IN THE UNIT PRICE BID PER LINEAR FOOT OF "RAPID CURE JOINT SEALANT".

### (3) REHABILITATED CONSTRUCTION JOINT WITH PREFORMED SILICONE FOAM JOINT (BRIDGE "C")

SEAL EXISTING EXPANSION JOINTS AS SHOWN IN THE PLANS WITH PREFORMED SILICONE FOAM JOINT MATERIAL, IN ACCORDANCE WITH SPECIAL PROVISION 504-X(A-C)09.

ALL COSTS, INCLUDING LABOR, EQUIPMENT, MATERIALS AND INCIDENTALS NECESSARY TO COMPLETE THE WORK AS SHOWN IN THE PLANS SHALL BE INCLUDED IN THE UNIT PRICE BID PER LINEAR FOOT OF "PREFORMED SILICONE FOAM JOINT."

### (4) REHABILITATED EXPANSION JOINT WITH PREFORMED SILICONE EXPANSION MATERIAL (BRIDGE "E")

SEAL EXISTING EXPANSION JOINTS AS SHOWN IN THE PLANS WITH PREFORMED SILICONE EXPANSION MATERIAL IN ACCORDANCE WITH THE SPECIAL PROVISIONS 701-18(A-B)09 AND 504-8(A-C)09.

ALL COSTS INCLUDING LABOR, EQUIPMENT, MATERIAL, AND INCIDENTALS NECESSARY TO COMPLETE THE WORK AS SHOWN IN THE PLANS SHALL BE INCLUDED IN THE UNIT PRICE BID PER LINEAR FOOT OF "EXPANSION DEVICE."

### (5) REMOVAL AND REPLACEMENT OF PAVEMENT MARKERS WITH ELASTOMERIC MORTAR (BRIDGE "E")

REMOVE EXISTING PAVEMENT MARKERS AT THE APPROXIMATE LOCATIONS SHOWN ON THE PLANS AND REPLACE THEM WITH ELASTOMERIC MORTAR PLACED IN ACCORDANCE WITH SUBSECTION 701.08G OF THE STANDARD SPECIFICATIONS FOR HIGHWAY CONSTRUCTION. THE CUTOUT AREA SHOULD MEASURE APPROXIMATELY 1'x3'x2" WITH THE MARKERS REMOVED IN PAIRS SIMULTANEOUSLY. THE DEPTH OF THE CUT SHOULD BE A MINIMUM OF 2", BUT NOT DEEPER THAN NECESSARY TO REMOVE THE MARKERS. ENSURE THAT NEW ELASTOMERIC MORTAR MATCHES GRADE WITH SURFACE CONCRETE OR ASPHALT OVERLAY.

THE CONTRACTOR SHALL TAKE CARE NOT TO CUT INTO EXISTING DECK REINFORCING. ANY DAMAGE TO REINFORCING STEEL OR EXISTING BEAMS DUE TO THE CONTRACTOR'S NEGLIGENCE SHALL BE REPAIRED AT THE CONTRACTOR'S EXPENSE, TO THE SATISFACTION OF THE ENGINEER.

ALL COSTS, INCLUDING LABOR, EQUIPMENT, MATERIAL AND INCIDENTALS NECESSARY TO COMPLETE THE WORK AS SHOWN IN THE PLANS SHALL BE INCLUDED IN THE UNIT PRICE BID PER CUBIC FOOT OF "ELASTOMERIC MORTAR."

## △ ENVIRONMENTAL MITIGATION NOTES

### BAT NOTE:

THE NORTHERN LONG-EARED BAT IS A THREATENED BAT SPECIES THAT OCCURS WITHIN THE PROJECT'S ACTION AREA. BASED ON PROJECT PLANS, NO TREE REMOVAL WILL OCCUR AS PART OF THIS PROJECT. IN ORDER TO AVOID ADVERSE IMPACTS TO THIS SPECIES, BRIDGE REPAIR, RETROFIT, MAINTENANCE, REHABILITATION OR DEMOLITION SHALL BE RESTRICTED TO BETWEEN NOVEMBER 16, AND MARCH 31, OUTSIDE OF THE ACTIVE SEASON. IF BRIDGE REPAIR, RETROFIT, MAINTENANCE, REHABILITATION OR DEMOLITION DURING THE ACTIVE SEASON (BETWEEN APRIL 1, AND NOVEMBER 15) CANNOT BE AVOIDED, THE RESIDENT ENGINEER SHALL CONTACT THE ODOT BIOLOGIST AT 405-521-2515 TO SCHEDULE A BAT BRIDGE INSPECTION, PRIOR TO ANY BRIDGE WORK.

BRIDGE INSPECTION/ SURVEYS CAN ONLY BE CONDUCTED BETWEEN MAY 15, AND AUGUST 15, AND ARE VALID ONLY UNTIL THE FOLLOWING MARCH 31. IF THE SURVEY FINDS LISTED BAT SPECIES USING THE BRIDGE/STRUCTURE, BRIDGE REPAIR, RETROFIT, MAINTENANCE, REHABILITATION OR DEMOLITION SHALL ONLY BE PERMITTED BETWEEN NOVEMBER 16, AND MARCH 31, WHEN BATS ARE HIBERNATING IN CAVES.

### MIGRATORY BIRD:

MIGRATORY BIRDS ARE PROTECTED BY THE FEDERAL MIGRATORY BIRD TREATY ACT. MANY BIRDS COMMONLY USE BRIDGES AND CULVERTS FOR NESTING. THE NESTING SEASON FOR MOST BIRD SPECIES EXTENDS FROM APRIL 1 TO AUGUST 31. NO SURVEY WAS DONE ON THIS PROJECT. THE RESIDENT ENGINEER SHALL CONTACT THE ODOT BIOLOGIST AT 405-521-2515 IF ANY BIRD USE OF THE EXISTING STRUCTURES IS OBSERVED. IF BIRDS ARE OBSERVED THEN PAINTING OF THE EXISTING BRIDGE/STRUCTURES SHALL BE CONDUCTED BETWEEN SEPTEMBER 1, AND MARCH 31, WHEN MIGRATORY BIRD NESTS ARE NOT OCCUPIED. THE BRIDGE MAY BE PROTECTED FROM NEW NEST ESTABLISHMENT PRIOR TO APRIL 1, BY MEANS THAT DO NOT RESULT IN BIRD DEATH OR INJURY. OPTIONS INCLUDE THE EXCLUSION OF ADULT BIRDS FROM SUITABLE NEST SITES ON OR WITHIN A STRUCTURE BY THE PLACEMENT OF WEATHER-RESISTANT POLYPROPYLENE NETTING WITH 0.25-INCH OR SMALLER OPENINGS, PRIOR TO APRIL 1. METHODS OTHER THAN NETTING MUST BE PRE-APPROVED BY THE ODOT BIOLOGIST.

### GOOD-HOUSEKEEPING REQUIREMENT:

MATERIAL STORAGE, CHEMICAL STORAGE, TRASH, SANITARY FACILITIES, ETC. SHOULD BE LOCATED NO CLOSER THAN 50 FEET FROM THE BANK OF ANY WATERS IN ORDER TO PROTECT WATER QUALITY.

DEBRIS SHALL NOT BE BURIED WITHIN LIMITS OF RIGHT-OF-WAY.

PAY QUANTITIES						
ITEM	DESCRIPTION			UNIT	QUANTITY	
0200	BRIDGE "A" - NBI 28740 - SH-51 EASTBOUND OVER VERDIGRIS RIVER					
523(C)	6570	DECK AREA SEALED (FLOODCOATS)	(BR-1)	(1)	S.Y.	3395.00

PAY QUANTITIES						
ITEM	DESCRIPTION			UNIT	QUANTITY	
0201	BRIDGE "B" - NBI 17962 - SH-16 OVER VERDIGRIS RIVER					
523(C)	6570	DECK AREA SEALED (FLOODCOATS)	(BR-1)	(1)	S.Y.	2866.00

PAY QUANTITIES						
ITEM	DESCRIPTION			UNIT	QUANTITY	
0202	BRIDGE "C" - NBI 26658 - US-69 OVER SH-9					
504(G)	6390	RAPID CURE JOINT SEALANT	(BR-1)	(2)	L.F.	228.00
504(J)	6400	PREFORMED SILICONE FOAM JOINT	(BR-1)	(3)	L.F.	228.00
523(C)	6570	DECK AREA SEALED (FLOODCOATS)	(BR-1)	(1)	S.Y.	4156.00

PAY QUANTITIES						
ITEM	DESCRIPTION			UNIT	QUANTITY	
0203	BRIDGE "D" - NBI 14482 - SH-10 OVER DEEP BRANCH CREEK					
523(C)	6570	DECK AREA SEALED (FLOODCOATS)	(BR-1)	(1)	S.Y.	809.00

PAY QUANTITIES						
ITEM	DESCRIPTION			UNIT	QUANTITY	
0204	BRIDGE "E" - NBI 19999 - US-59 OVER BARREN FORK CREEK					
504(C)	1450	EXPANSION DEVICE	(BR-1)	(4)	L.F.	93.00
504(H)	6389	ELASTOMERIC MORTAR	(BR-1)	(5)	C.F.	5.00
523(C)	6570	DECK AREA SEALED (FLOODCOATS)	(BR-1)	(1)	S.Y.	1912.00

PAY QUANTITIES						
ITEM	DESCRIPTION			UNIT	QUANTITY	
0640	CONSTRUCTION					
641	1399	MOBILIZATION		LSUM		1.00

BR-1:  
PAYMENT FOR THIS ITEM WILL BE BASED ON THE PLAN QUANTITY ONLY.  
SEE SECTION 109.01B OF THE STANDARD SPECIFICATIONS.

BRIDGES "A" - "E"		MULTIPLE COUNTIES		Design	N/A	N/A
GENERAL NOTES AND SUMMARY OF PAY QUANTITIES (BRIDGE)				Detail	DAN	5/17
				Check	RAH	6/17
				Squad:	HENSLLEY	
				Engr:	DEFRANCO	
STATE OF OKLAHOMA		DEPARTMENT OF TRANSPORTATION			JOB/PIECE NO. 33216(04)	
				SHEET NO. AB01		

REVISIONS		
REV. NO.	DESCRIPTION	DATE

**GENERAL CONSTRUCTION NOTES**

ANY SIGNS AND/OR DELINEATORS WHICH ARE TO BE REMOVED DURING THIS PROJECT WILL BE STORED IN A PROTECTED AREA DESIGNATED BY THE RESIDENT ENGINEER UNTIL SUCH A TIME THAT THEY ARE TO BE RESET BY THE CONTRACTOR. COST OF THIS WORK TO BE INCLUDED IN OTHER ITEMS OF WORK.

THE CONTRACTOR SHALL BE RESPONSIBLE FOR PROPER BARRICADES, LIGHTS, SIGNING, AND DEVICES WITHIN THE LIMITS OF CONSTRUCTION AND DETOUR ROUTE(S). ALL CONSTRUCTION SIGNING WILL BE DONE ACCORDING TO STANDARDS SET FORTH IN THE "MANUAL ON UNIFORM TRAFFIC CONTROL DEVICES, CURRENT EDITION", AND AS SHOWN ON TCS STANDARD DRAWINGS.

ALL TEMPORARY TRAFFIC CONTROL DEVICES SHALL MEET ODOT'S "QUALITY STANDARDS FOR TEMPORARY TRAFFIC CONTROL DEVICES."

ANY DAMAGE CAUSED BY THE CONTRACTOR TO ANY STRUCTURES, ROADWAY SURFACES, STRIPING, RAISED PAVEMENT MARKERS, GUARDRAIL, ATTENUATORS, SLOPES, OR SIGNS SHALL BE REPLACED OR REPAIRED AT CONTRACTOR'S EXPENSE AND TO THE SATISFACTION OF THE ENGINEER.

THE ITEMS TO BE REMOVED AND/OR RESET SHALL BE HANDLED WITH CARE. THE CONTRACTOR SHALL BE RESPONSIBLE FOR ANY DAMAGE DURING THESE OPERATIONS.

THE CONTRACTOR SHALL TAKE ALL NECESSARY PRECAUTIONS TO PROTECT THE AREAS UNDER THE BRIDGES FROM FALLING DEBRIS AND BE SOLELY RESPONSIBLE FOR SAFEGUARDING THESE AREAS.

THE CONTRACTOR MUST NOTIFY THE RESIDENT ENGINEER 7 DAYS PRIOR TO ANY LANE CLOSURE.

THE CONTRACTOR SHALL PROVIDE A PERSON TO BE ON CALL AS NEEDED AS DETERMINED BY THE ENGINEER. THIS PERSON SHALL HOLD A CURRENT CERTIFICATION FROM THE AMERICAN TRAFFIC SAFETY SERVICE ASSOCIATION (ATSSA) OR THE OKLAHOMA TRAFFIC ENGINEERING ASSOCIATION (OTEA) AS A TRAFFIC CONTROL TECHNICIAN OR TRAFFIC CONTROL SUPERVISOR.

REMOVED MATERIAL TO BECOME PROPERTY OF CONTRACTOR AND IT SHALL BE DISPOSED OF IN A MANNER APPROVED BY THE ENGINEER.

THIS PROJECT SHALL BE CONSTRUCTED WITHOUT CLOSING TRAFFIC ON CROSS STREETS. A MINIMUM OF ONE LANE IN EACH DIRECTION SHALL BE MAINTAINED AT ALL TIMES. SEE O.D.O.T. STANDARDS AND DETAIL DRAWINGS FOR MAINTENANCE OF LOCAL AND THROUGH TRAFFIC.

ALL REGULATORY SIGNS SHALL HAVE HIGH INTENSITY SHEETING. THE HIGH INTENSITY SHEETING SHALL MEET THE REQUIREMENTS OF ASTM D4956-(LATEST REVISION) FOR TYPE III SHEETING.

ALL WARNING SIGNS SHALL HAVE FLUORESCENT YELLOW SHEETING. THE FLUORESCENT YELLOW SHEETING SHALL MEET THE REQUIREMENTS OF ASTM D4956-(LATEST REVISION) REQUIREMENTS FOR TYPE VIII SHEETING.

THE MANUFACTURER SHALL FURNISH A TYPE 'A' CERTIFICATION IN ACCORDANCE WITH ODOT STANDARD SPECIFICATIONS, LATEST EDITION, SUBSECTION 106.04. THE CERTIFICATION SHALL INCLUDE TEST RESULTS ON THE MATERIAL SUBMITTED FOR APPROVAL.

(TC-52) ANY USED PORTABLE CHANGEABLE MESSAGE SIGN TRUCK MOUNTED ATTENUATOR TO BE PLACED ON THIS PROJECT SHALL BE SUBJECT TO INSPECTION AND APPROVAL BY THE OKLAHOMA DEPARTMENT OF TRANSPORTATION, TO ASSURE THAT THEY ARE IN GOOD WORKING CONDITION, PRIOR TO PLACEMENT ON THE PROJECT.

(TC-70) THIS ITEM IS AN ESTIMATED QUANTITY TO BE USED AS DEEMED NECESSARY BY THE ENGINEER.

(TC-76) ANY TRUCK MOUNTED ATTENUATOR USED ON THIS PROJECT SHALL HAVE PASSED ALL MANDATORY AND OPTIONAL TESTS LISTED IN NCHRP 350, TL-3 CRITERIA. THIS ITEM IS TO BE USED WHERE SHOWN IN THE STANDARD DRAWINGS OR AT THE DISCRETION OF THE ENGINEER ON SHADOW VEHICLES PROTECTING THE WORK AREAS AND TEMPORARY ROADSIDE HAZARDS.

(TC-77) TRUCK MOUNTED ATTENUATORS ARE TO BE INSTALLED ON NON STATE OWNED TRUCKS HAVING A MINIMUM GROSS WEIGHT RATING OF 15,000 POUNDS. EACH OF THESE TRUCKS SHALL ALSO BE EQUIPPED WITH AN ARROW DISPLAY (TYPE B).

(TC-84) 75 CONSTRUCTION CALENDAR DAYS WERE USED TO COMPUTE THE SIGN DAY PAY ITEMS. THE AMOUNT OF CALENDAR DAYS USED TO COMPUTE THE SIGN DAY PAY ITEMS IS AN ESTIMATED QUANTITY ONLY, BASED ON THE CURRENT ODOT STANDARDS AND SUGGESTED CONSTRUCTION SEQUENCE FOR THIS PROJECT. THESE ESTIMATED SIGN DAY QUANTITIES MAY CHANGE AS THE PROJECT'S CONSTRUCTION TRAFFIC CONTROL IS MODIFIED DURING CONSTRUCTION.

(TC-85) THESE SIGNS MUST BE ON THE OKLAHOMA DEPARTMENT OF TRANSPORTATION LIST OF APPROVED CHANGEABLE MESSAGE SIGNS. FOR A LIST OF THE APPROVED SIGNS GO TO THE OKLAHOMA DEPARTMENT OF TRANSPORTATION WEBSITE AT: <http://www.okladot.state.ok.us/traffic/qpl/index.php>

**PAY QUANTITY**

**0300 TRAFFIC CONTROL**

ITEM NO.	CODE NO.	DESCRIPTION	UNIT	QUANTITY
876(A)	8482	(PL)TRUCK MOUNTED ATTENUATOR (TC-52,76,77,84)	SD	75.00
880(A)	8812	ARROW DISPLAY (TYPE C) (TC-70)	SD	45.00
880(B)	8818	CONSTRUCTION SIGNS 0 TO 6.25 SF (TC-26,33,84)	SD	750.00
880(B)	8821	CONSTRUCTION SIGNS 6.26 SF TO 15.99 SF (TC-26,33,84)	SD	1,800.00
880(B)	8824	CONSTRUCTION SIGNS 16.0 SF TO 32.99 SF (TC-26,30,33,84)	SD	1,875.00
880(C)	8842	CONSTRUCTION BARRICADES(TYPE III) (TC-26,84)	SD	900.00
880(C)	8848	WING BARRICADES (TC-26,84)	SD	300.00
880(E)	8860	WARNING LIGHTS(TYPE A) (TC-26,84)	SD	2,550.00
880(F)	8878	DRUMS (SP-1)(TC-26,84)	SD	2,625.00
880(G)	8890	CHANNELIZER CONES (TC-26,84)	SD	3,750.00
880(I)	8902	FLAGGER (TC-70)	SD	45.00
882(A)	8306	PORTABLE CHANGEABLE MESSAGE SIGN (SP-2)(TC-52,84,85)	SD	178.00

**SPECIAL PAY QUANTITY NOTES**

- (SP-1) TYPE 'C' WARNING LIGHTS ARE NOT REQUIRED.
- (SP-2) CHANGEABLE MESSAGE SIGNS TO BE PLACED ON THE PROJECT 14 DAYS IN ADVANCE OF THE START DATE.

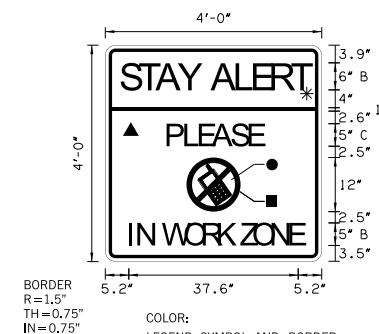
**PAY QUANTITY NOTES**

(TC-26) ALL CONSTRUCTION TRAFFIC CONTROL WILL BE IMPLEMENTED ACCORDING TO CONSTRUCTION PLANS, AND INSTALLED IN A MANNER APPROVED BY THE ENGINEER, IN ACCORDANCE WITH CHAPTER VI OF THE MANUAL ON UNIFORM TRAFFIC CONTROL DEVICES, (CURRENT EDITION), AND COMPLIANT WITH APPLICABLE O.D.O.T. STANDARD DRAWINGS. PRICE BID FOR THIS ITEM SHALL BE PAYMENT IN FULL FOR THE INSTALLATION, MAINTENANCE AND SUBSEQUENT REMOVAL OF ALL NECESSARY CONSTRUCTION TRAFFIC CONTROL DEVICES REQUIRED FOR COMPLETION OF THE PROJECT.

ALL SIGNS AND BARRICADES WHICH ARE SHOWN WITH TYPE 'A' LIGHTS IN THE STANDARD DRAWINGS SHALL HAVE THE CORRESPONDING LIGHT ATTACHED DURING NON-DAYLIGHT HOURS.

(TC-30) INCLUDED IN THIS ITEM ARE ALL S.C.S. (SPECIAL CONSTRUCTION SIGNING) SIGNS WHICH ARE BETWEEN 16.00 S.F. AND 32.99 S.F. ALSO INCLUDED IN THIS ITEM SHALL BE THE COST OF INSTALLATION, MAINTENANCE, AND REMOVAL OF THESE SIGNS.

(TC-33) ALL CONSTRUCTION WORK ZONE SIGNS SHALL HAVE FLUORESCENT SHEETING. THE FLUORESCENT SHEETING SHALL MEET THE REQUIREMENTS OF ASTM D4956 (LATEST REVISION). THE MANUFACTURER SHALL FURNISH A TYPE 'D' CERTIFICATION IN ACCORDANCE WITH O.D.O.T. STANDARD SPECIFICATIONS, (CURRENT EDITION) SUBSECTION 106.04. THE CERTIFICATION SHALL INCLUDE TEST RESULTS ON MATERIAL SUBMITTED FOR APPROVAL.



- BORDER  
R=1.5"  
TH=0.75"  
IN=0.75"
- COLOR:  
LEGEND, SYMBOL AND BORDER  
BLACK (NON-REFLECTORIZED)  
BACKGROUND:  
▲ FLUORESCENT ORANGE (REFLECTORIZED)  
\* FLUORESCENT YELLOW (REFLECTORIZED)  
● WHITE (REFLECTORIZED)  
■ RED (TRANSPARENT)

PREPARED BY:  
OKLAHOMA DEPARTMENT OF TRANSPORTATION  
TRAFFIC ENGINEERING DIVISION

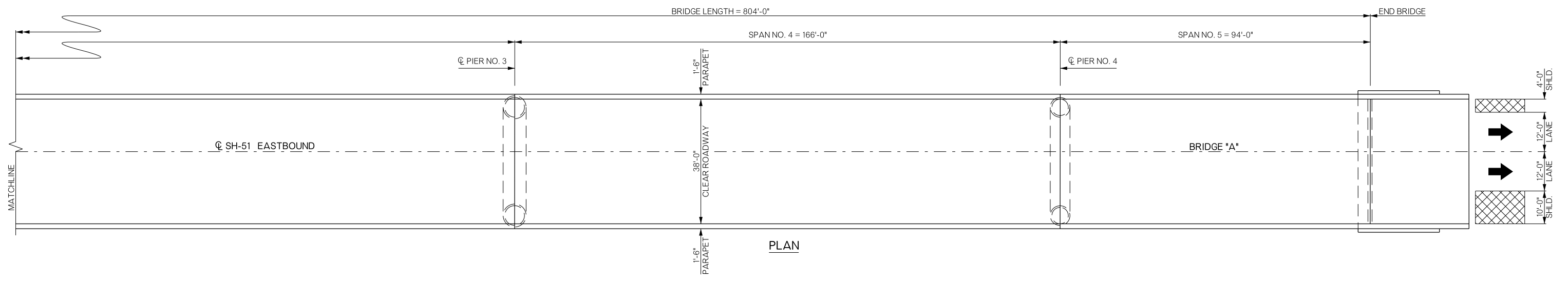
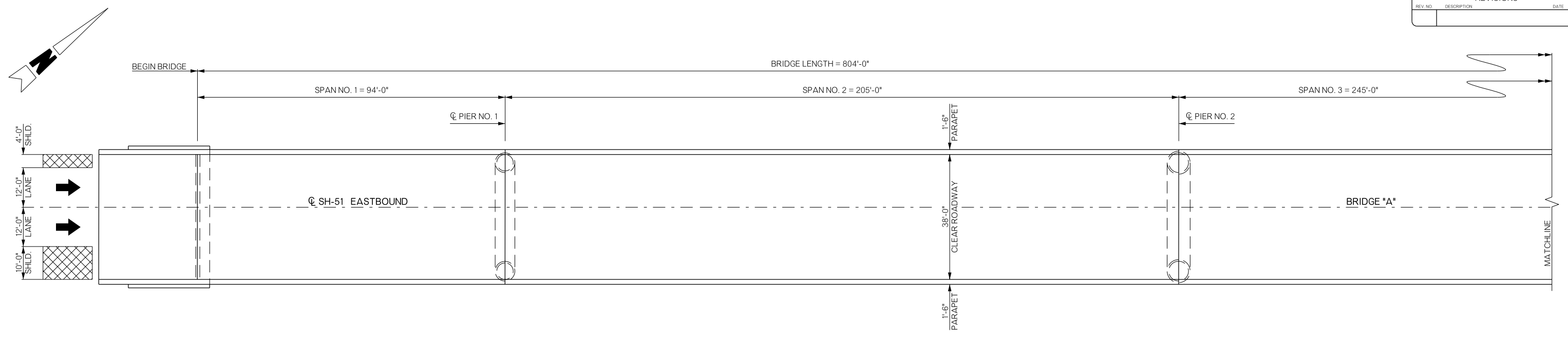
*Jami L. Short*  
DATE: 06-28-17

**DOT**  
OKLA. REG. NO. 22542

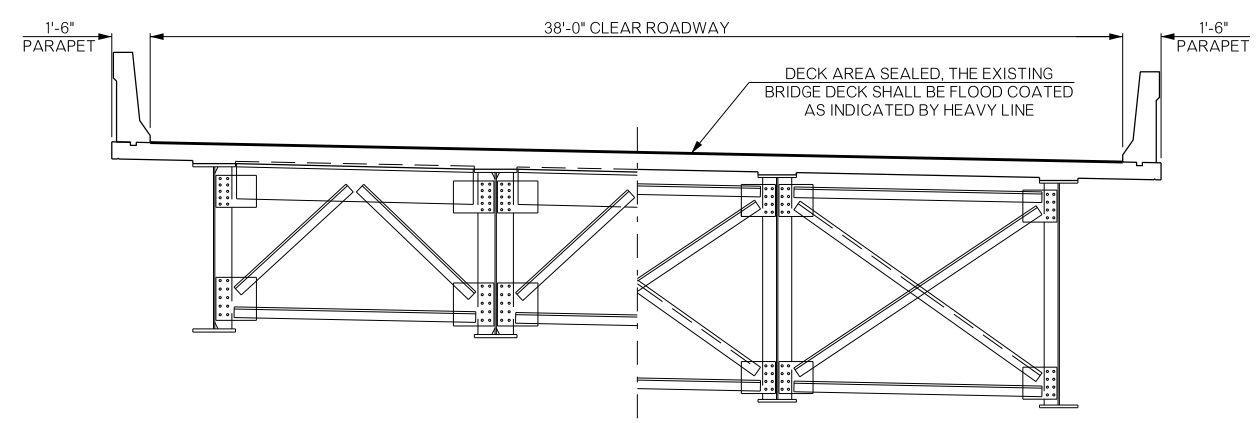
PROFESSIONAL ENGINEER  
JAMI L. SHORT  
22542  
OKLAHOMA

DIVISION 1	WAGONER COUNTY	DETAIL:	RGN	6/17
SUMMARY OF PAY QUANTITIES & NOTES (TRAFFIC)		CHECK:	AF	6/17
		ENGINEER:	SEB	6/17
GROUP: WILLIAMS		EM: SHORT		
STATE OF OKLAHOMA	DEPARTMENT OF TRANSPORTATION	JOB/PIECE NO. 33216(04)	SHEET NO. AT01	

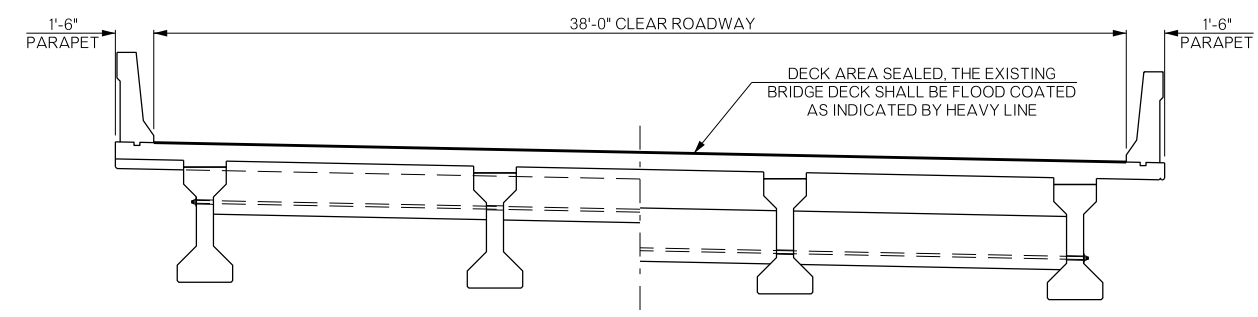
REVISIONS		
REV. NO.	DESCRIPTION	DATE



PLAN



TYPICAL SECTION  
(SPAN NOS. 2, 3 AND 4)

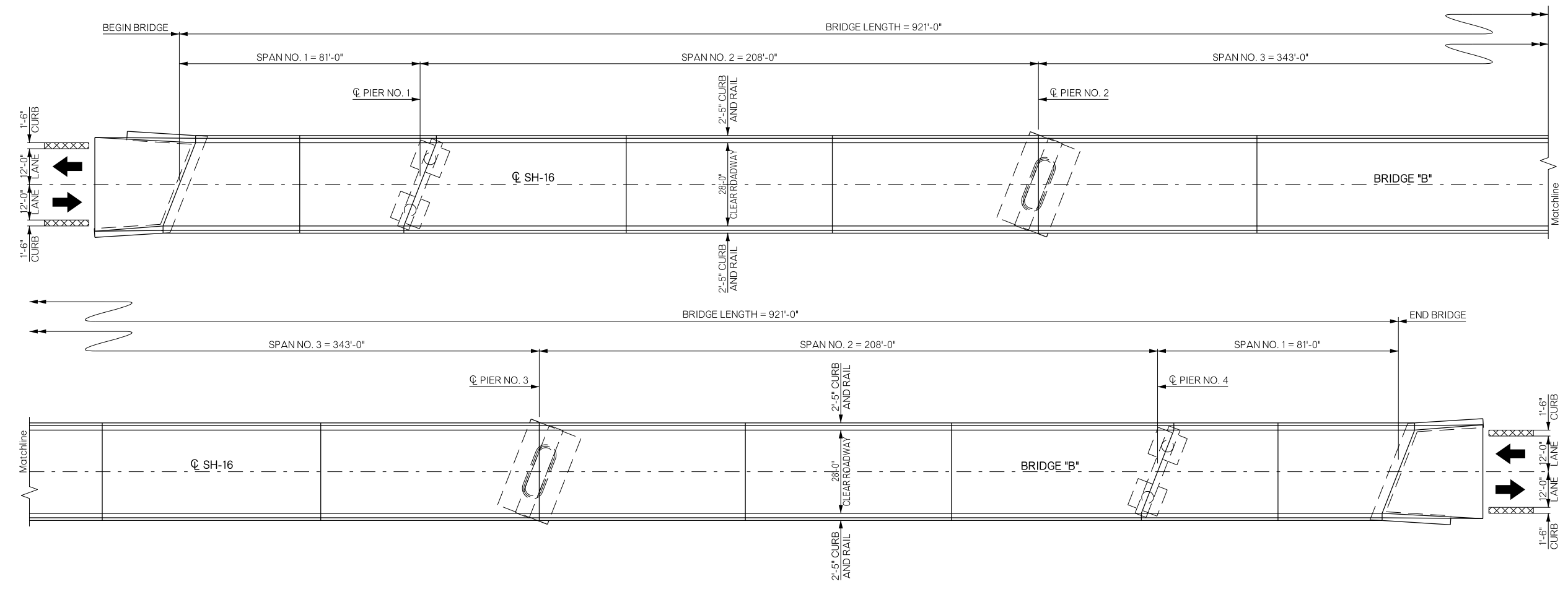


TYPICAL SECTION  
(SPAN NOS. 1 & 5)

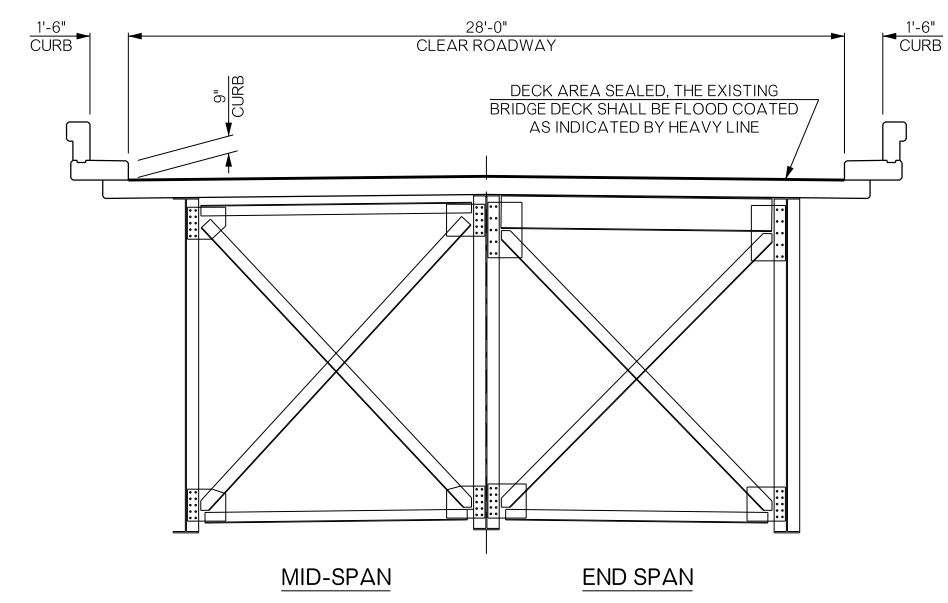
BRIDGE "A"		WAGONER COUNTY		Design	N/A	N/A
SH-51 EASTBOUND OVER VERDIGRIS RIVER				Detail	DAN	4/17
GENERAL PLAN AND TYPICAL SECTION (BRIDGE "A")				Check	RAH	6/17
				Squad	HENSFLEY	
				Engr.	DEFRANCO	
STATE OF OKLAHOMA		DEPARTMENT OF TRANSPORTATION				
JOB/PIECE NO. 33216(04)		SHEET NO. B001				



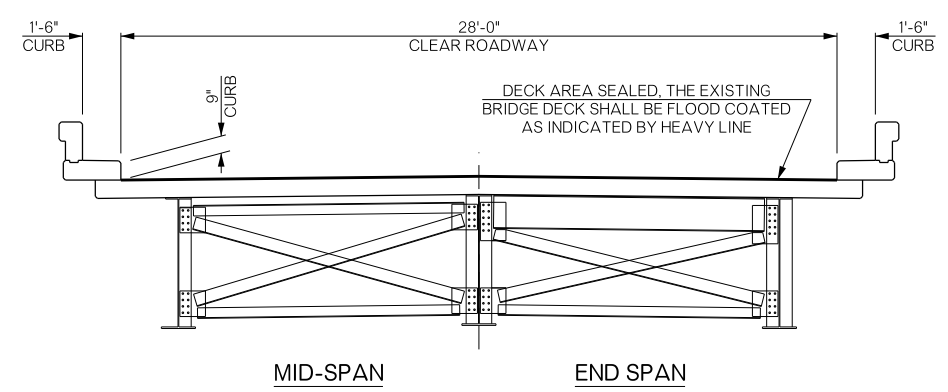
REVISIONS		
REV. NO.	DESCRIPTION	DATE



PLAN



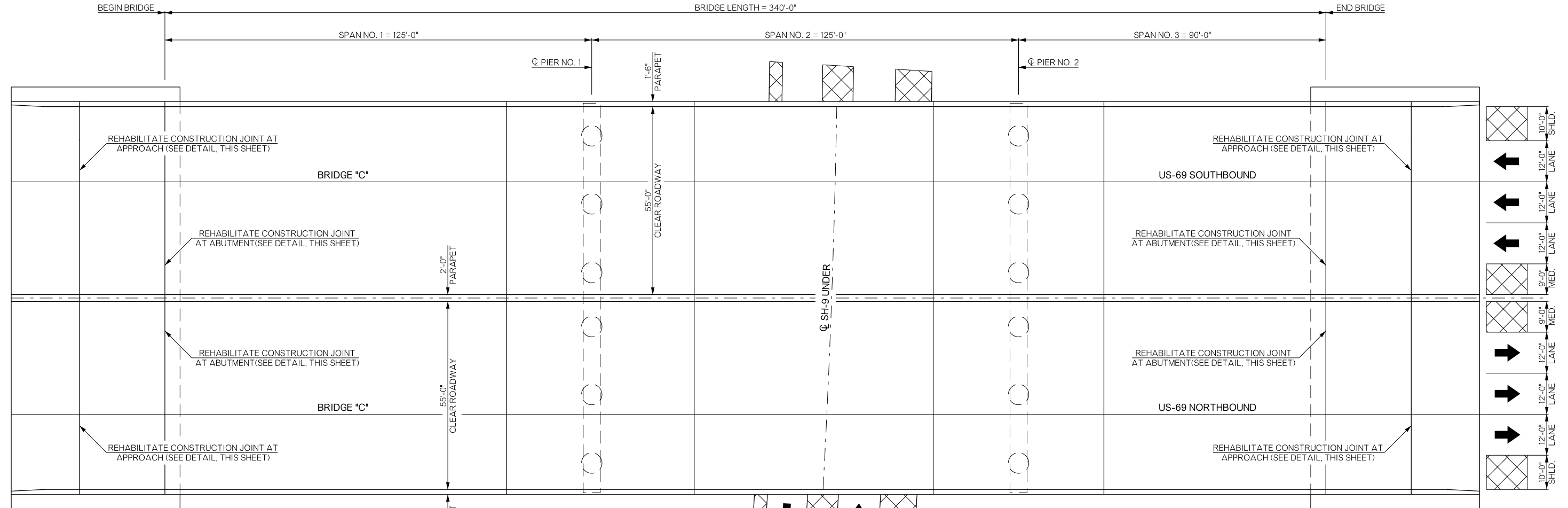
TYPICAL SECTION  
208'-343'-208' SPANS



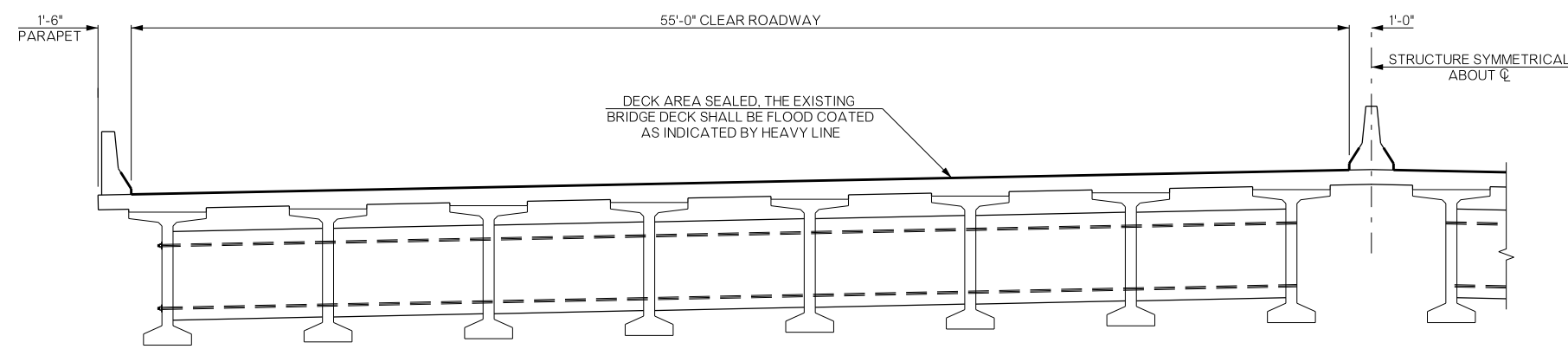
TYPICAL SECTION  
81' SPANS

BRIDGE "B" SH-16 OVER VERDIGRIS RIVER		WAGONER COUNTY		Design	N/A	N/A
GENERAL PLAN AND TYPICAL SECTION (BRIDGE "B")				Detail	DAN	4/17
				Check	RAH	6/17
STATE OF OKLAHOMA				DEPARTMENT OF TRANSPORTATION		
JOB/PIECE NO. 33216(04)				SHEET NO. B002		

REVISIONS		
REV. NO.	DESCRIPTION	DATE

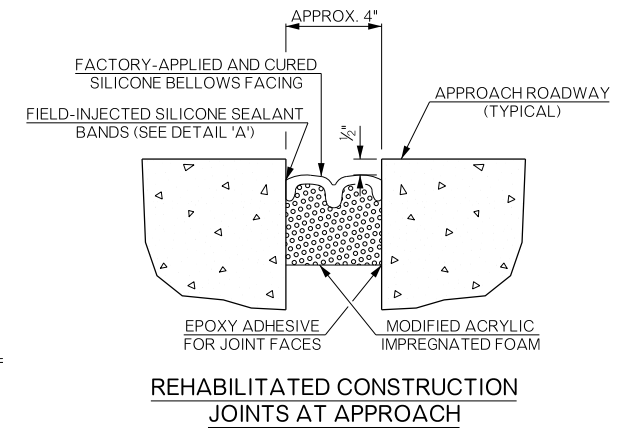


PLAN

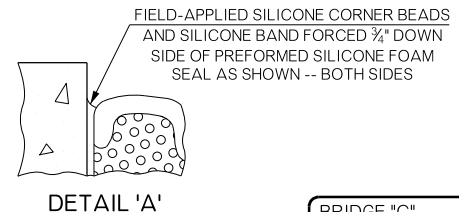


TYPICAL SECTION

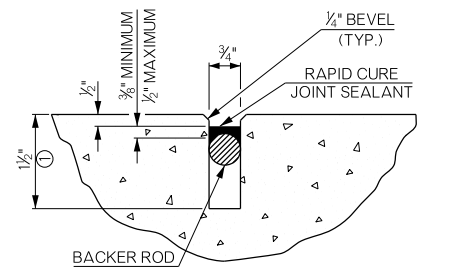
NOTE: SOUTHBOUND LANES SHOWN.  
NORTHBOUND IS OPPOSITE HAND AND  
SHALL ALSO RECEIVE FLOOD COAT.



REHABILITATED CONSTRUCTION JOINTS AT APPROACH



DETAIL 'A'

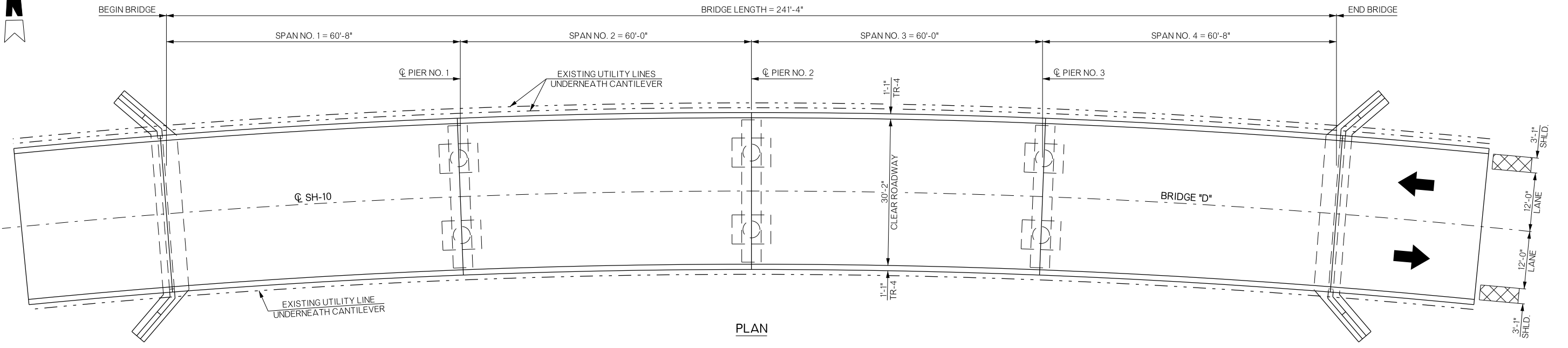


REHABILITATED CONSTRUCTION JOINTS AT ABUTMENTS

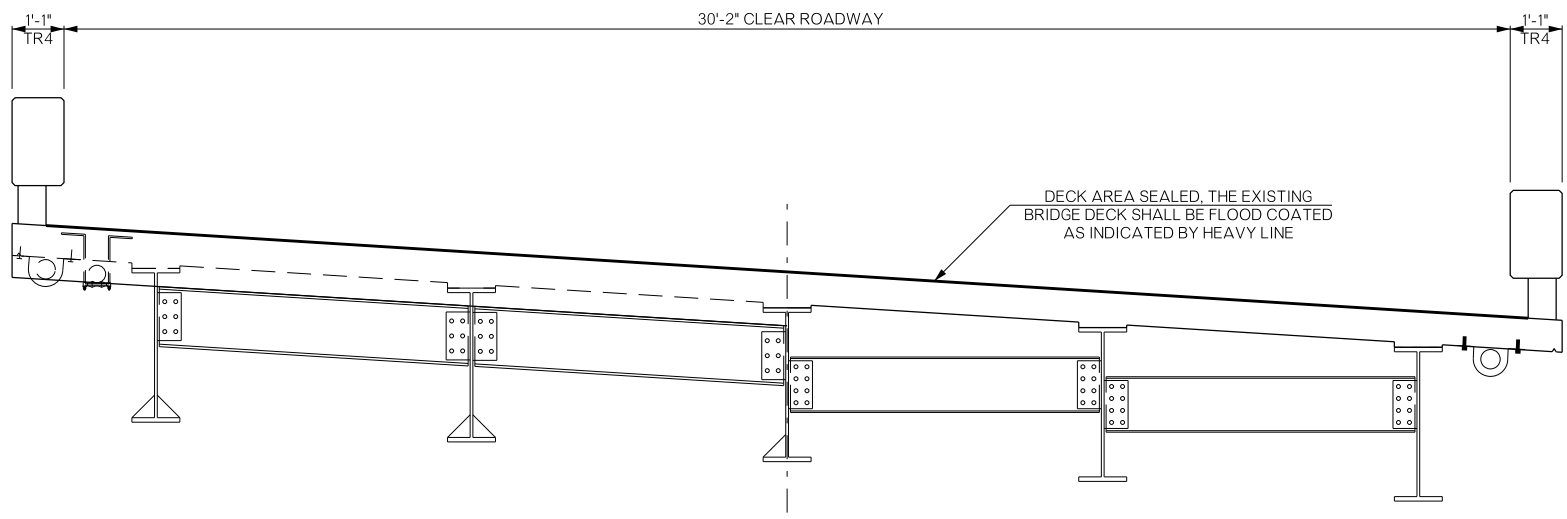
① SAW TO THE DEPTH SHOWN TO PROVIDE CLEAN, STRAIGHT SURFACES.

BRIDGE "C" US-69 OVER SH-9	MCINTOSH COUNTY	Design	N/A	N/A
GENERAL PLAN AND TYPICAL SECTION (BRIDGE "C")		Detail	DAN	4/17
		Check	RAH	6/17
STATE OF OKLAHOMA		Squad:	HENSFLEY	
DEPARTMENT OF TRANSPORTATION		Engr:	DEFRANCO	
JOB/PIECE NO. 33216(04)	SHEET NO. B003			

REVISIONS		
REV. NO.	DESCRIPTION	DATE



PLAN



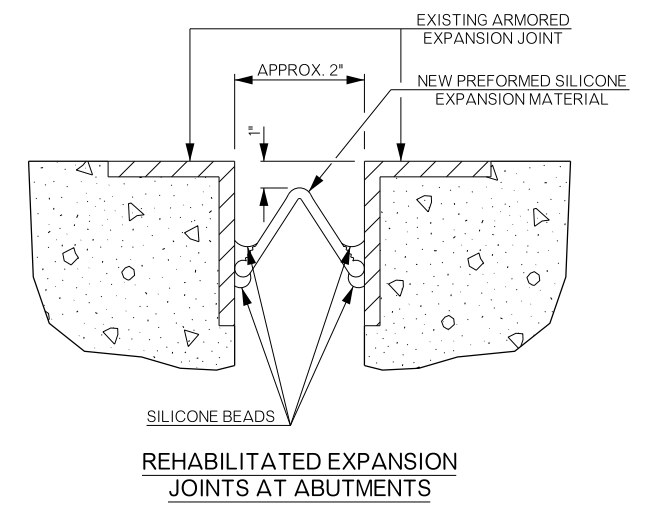
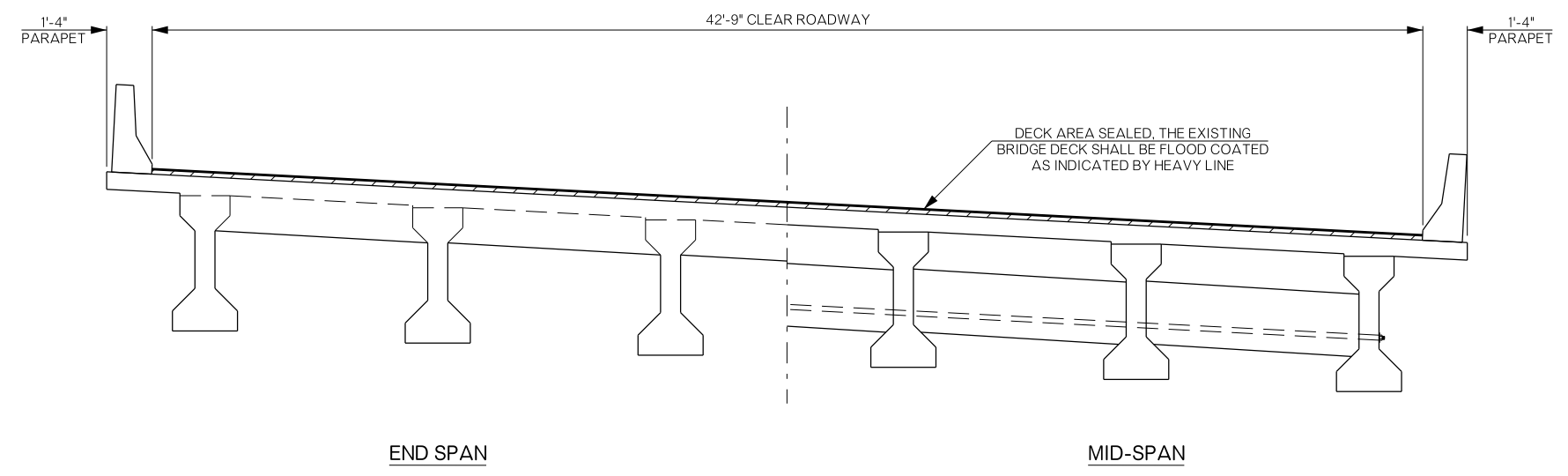
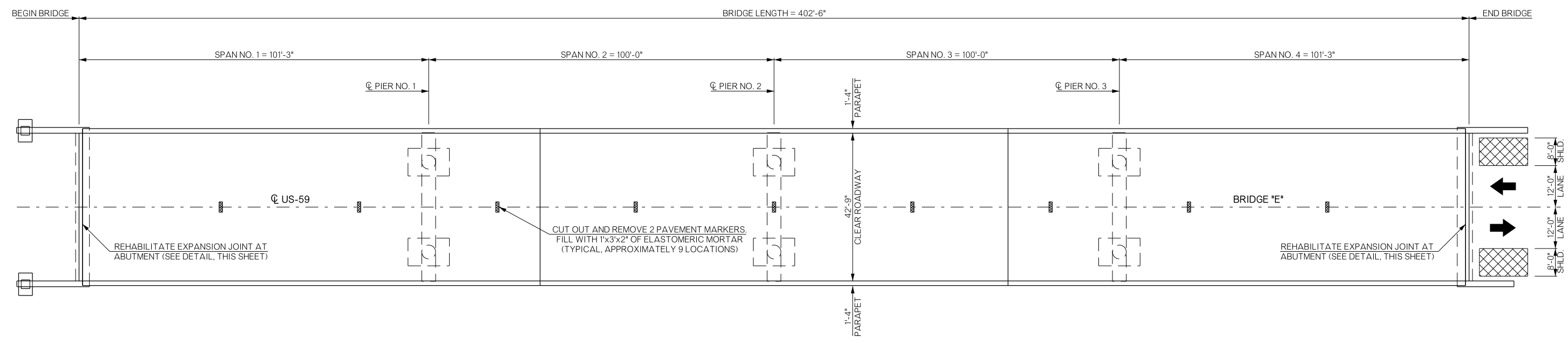
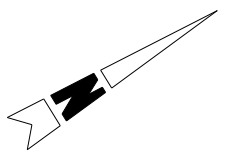
END SPAN

MID-SPAN

TYPICAL SECTION

BRIDGE "D" SH-10 OVER DEEP BRANCH CREEK	SEQUOYAH COUNTY	Design	N/A	N/A
GENERAL PLAN AND TYPICAL SECTION (BRIDGE "D")		Detail	DAN	4/17
		Check	RAH	6/17
STATE OF OKLAHOMA		Squad:	HENSLLEY	
DEPARTMENT OF TRANSPORTATION		Engr:	DEFRANCO	
JOBPIECE NO. 33216(04)	SHEET NO. B004			

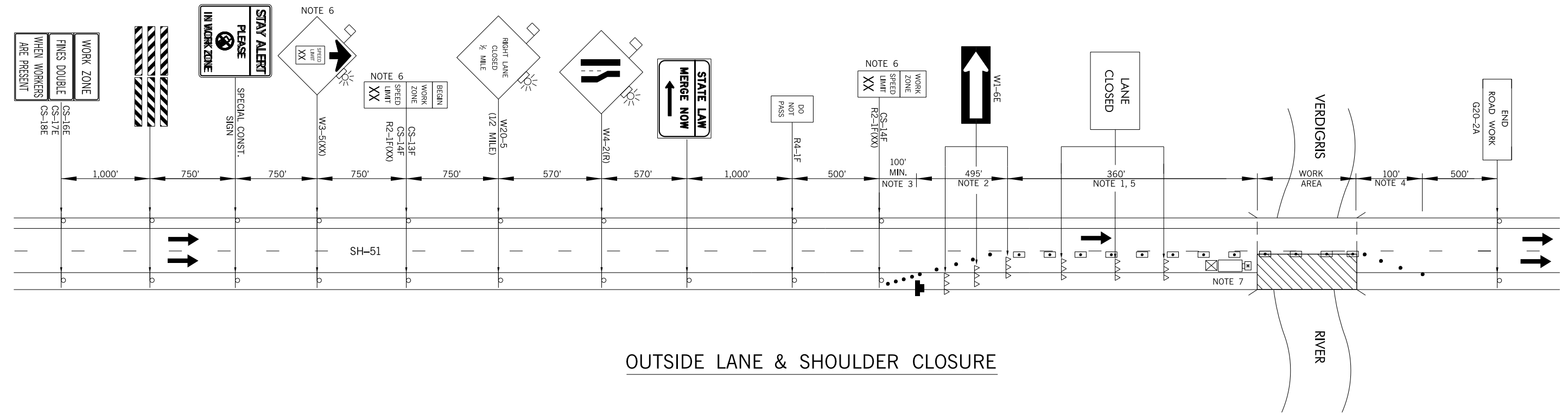
REVISIONS		
REV. NO.	DESCRIPTION	DATE



BRIDGE "E" US-59 OVER BARREN FORK CREEK	ADAIR COUNTY	Design	N/A	N/A
GENERAL PLAN AND TYPICAL SECTION (BRIDGE "E")		Detail	DAN	4/17
		Check	RAH	6/17
STATE OF OKLAHOMA		Squad:	HENSFLEY	
DEPARTMENT OF TRANSPORTATION		Engr:	DEFRANCO	
JOB/PIECE NO. 33216(04)	SHEET NO. B005			

REVISIONS		
REV. NO.	DESCRIPTION	DATE

INSIDE LANE CLOSURE SHALL MIRROR THE OUTSIDE LANE CLOSURE SHOWN.



**OUTSIDE LANE & SHOULDER CLOSURE**

**NOTE 1**  
MAXIMUM SPACING BETWEEN CHANNELIZING DEVICES (FEET) SHALL BE EQUAL TO TWICE THE POSTED SPEED LIMIT (M.P.H.) WITH THE FOLLOWING EXCEPTIONS. SPACING SHALL NOT EXCEED 50 FEET FOR CONES OR TUBE CHANNELIZERS. SPACING SHALL NOT EXCEED 75 FEET FOR CHANNELIZER CONES. SPACING SHALL NOT EXCEED 100 FEET FOR TYPE II BARRICADES, VERTICAL PANELS OR DRUMS.

**NOTE 2**  
MAXIMUM SPACING BETWEEN CHANNELIZING DEVICES (FEET) SHALL BE EQUAL TO THE POSTED SPEED LIMIT (M.P.H.) WITH THE FOLLOWING EXCEPTIONS. SPACING SHALL NOT EXCEED 25 FEET FOR CONES OR TUBE CHANNELIZERS. SPACING SHALL NOT EXCEED 50 FEET FOR TYPE II BARRICADES, VERTICAL PANELS OR DRUMS.

**NOTE 3**  
A MINIMUM OF FIVE (5) CHANNELIZING DEVICES SHALL BE PLACED THROUGH THIS TAPER.

**NOTE 4**  
DOWNSTREAM TAPERS SHALL CONTAIN A MINIMUM OF FOUR (4) CHANNELIZING DEVICES.

**NOTE 5**  
A LONGITUDINAL BUFFER AREA, TO ALLOW WORKERS TIME TO EVACUATE THE WORK AREA, SHOULD BE PROVIDED. FOR GUIDELINES ON SETTING THE LENGTH OF THIS BUFFER, SEE STANDARD DRAWING TCS2-1-(LATEST REVISION). ACTUAL LENGTH SHALL BE DETERMINED BY FIELD CONDITIONS AND THE JUDGEMENT OF THE ENGINEER.

**NOTE 6**  
CONSTRUCTION SPEED LIMIT TO BE DETERMINED BY THE DIVISION ENGINEER.

**NOTE 7**  
THE TRUCK MOUNTED ATTENUATOR SHOWN AT THE BEGINNING OF THE WORK AREA SHALL BE IN PLACE WHENEVER WORKERS ARE IN THE WORK AREA. THIS VEHICLE SHALL BE REMOVED FROM THE ROADWAY WHENEVER WORKERS ARE NOT IN THE WORK AREA. THIS VEHICLE SHALL BE EQUIPPED WITH AN ACTUATED FLASHING OR REVOLVING YELLOW LIGHT.

FOR ADDITIONAL INFORMATION ABOUT TAPER LENGTHS AND SPACING OF CHANNELIZING DEVICES, SEE STANDARD DRAWING TCS2-1-(LATEST REVISION).

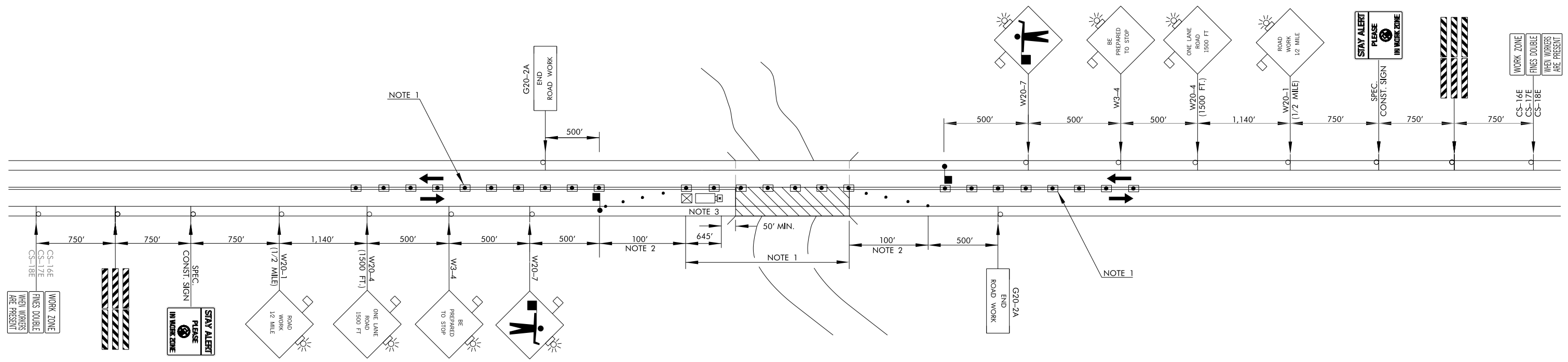
- KEY:**
- SIGN
  - DRUM
  - WORK AREA
  - ARROW DISPLAY
  - TYPE III BARRICADE
  - CHANNELIZER CONE
  - TRUCK MOUNTED ATTENUATOR

DIVISION 1	WAGONER COUNTY	DETAIL:	RGN	6/17
TRAFFIC CONTROL DETAIL SH-51 EB OVER VERDIGRIS RIVER BRIDGE 'A'		CHECK:	AF	6/17
		ENGINEER:	SEB	6/17
STATE OF OKLAHOMA		GROUP:	WILLIAMS	
		EM:	SHORT	
JOB/PIECE NO. 33216(04)		SHEET NO. T001		

DRAWING NOT TO SCALE

REVISIONS		
REV. NO.	DESCRIPTION	DATE

WESTBOUND LANE CLOSURE SHALL MIRROR THE EASTBOUND LANE CLOSURE SHOWN.



**NOTE 1**  
 MAXIMUM SPACING BETWEEN CHANNELIZING DEVICES (FEET) SHALL BE TWICE THE POSTED SPEED LIMIT (M.P.H.) WITH THE FOLLOWING EXCEPTIONS. SPACING SHALL NOT EXCEED 50 FEET FOR CONES OR TUBE CHANNELIZERS. SPACING SHALL NOT EXCEED 75 FEET FOR CHANNELIZER CONES, SPACING SHALL NOT EXCEED 100 FEET FOR VERTICAL PANELS OR DRUMS.

**NOTE 2**  
 A MINIMUM OF FIVE (5) CHANNELIZING DEVICES SHALL BE PLACED THRU THIS AREA.

**NOTE 3**  
 THE TRUCK MOUNTED ATTENUATOR VEHICLE SHOWN AT THE BEGINNING OF THE WORK AREA SHALL BE IN PLACE WHENEVER WORKERS ARE IN THE WORK AREA. THIS VEHICLE SHALL BE REMOVED FROM THE ROADWAY WHENEVER WORKERS ARE NOT IN THE WORK AREA. THIS VEHICLE SHALL BE EQUIPPED WITH AN ACTUATED FLASHING OR REVOLVING YELLOW LIGHT.

THE FLAGGERS SHALL BE IN SIGHT OF EACH OTHER OR IN DIRECT CONTACT AT ALL TIMES AND SHALL BE POSITIONED TO PROTECT THE WORKERS.

WHEN NO WORK IS BEING PERFORMED AND TWO LANE TRAFFIC IS OPERATING, FLAGGERS WILL NOT BE REQUIRED. WHENEVER FLAGGERS ARE NOT PRESENT, THE "FLAGGER" SIGNS SHALL BE REMOVED OR COVERED.

FLOODLIGHTS SHOULD BE PROVIDED TO MARK FLAGGER STATIONS AT NIGHT AS NEEDED.

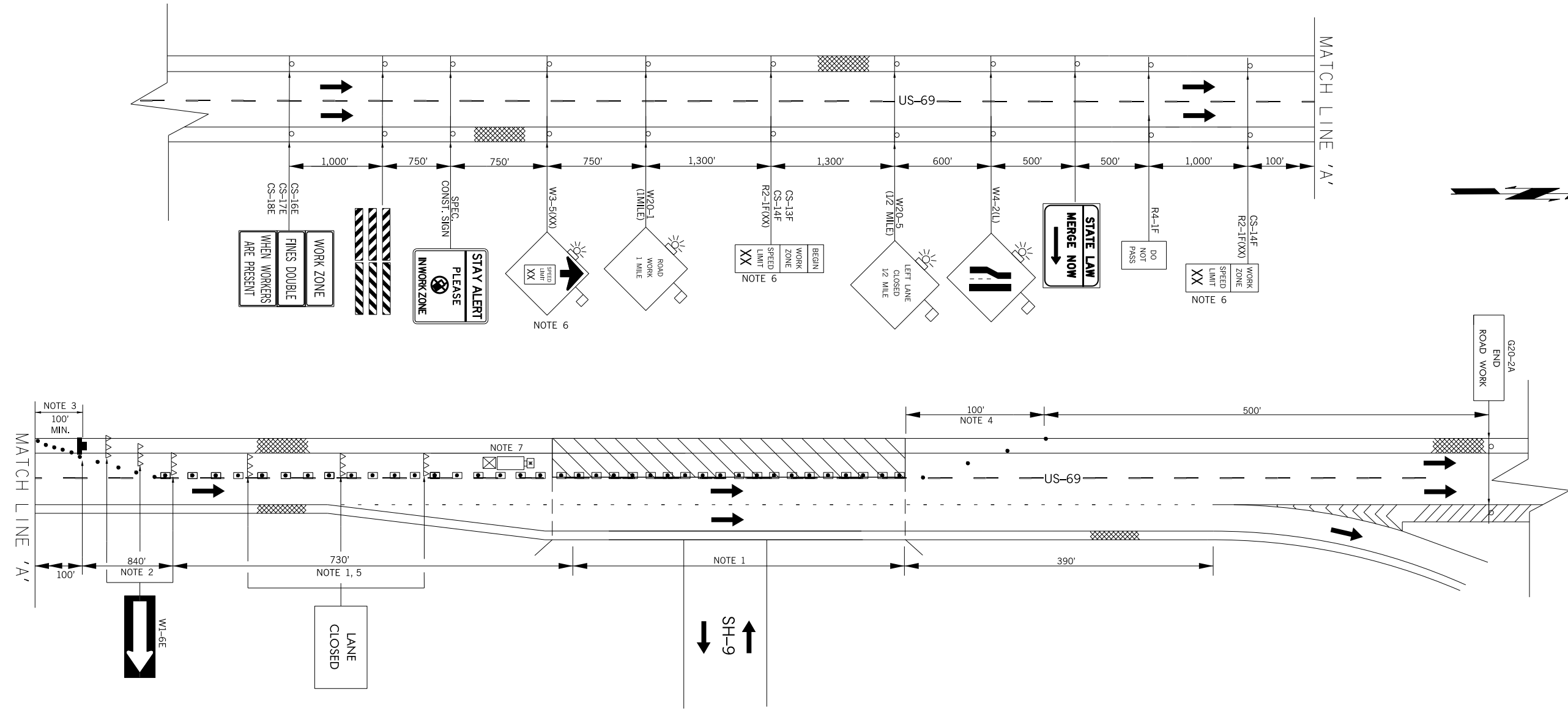
IN INSTANCES WHERE SIGHT DISTANCE MAY BE RESTRICTED DUE TO A CREST VERTICAL CURVE, HORIZONTAL CURVE OR OTHER FACTORS, THE CHANNELIZING DEVICES ARE TO BE EXTENDED TO A POINT WHERE THEY ARE VISIBLE TO APPROACHING TRAFFIC.

- KEY:
- SIGN
  - DRUM
  - CHANNELIZER CONE
  - WORK AREA
  - TRUCK MOUNTED ATTENUATOR
  - FLAGGER

DRAWING NOT TO SCALE

DIVISION 1		WAGONER COUNTY		DETAIL:	RGN	6/17
TRAFFIC CONTROL DETAIL FLAGGING OPERATION BRIDGES 'B', 'D', & 'E'				CHECK:	AF	6/17
				ENGINEER:	SEB	6/17
STATE OF OKLAHOMA				GROUP:	WILLIAMS	
				EM:	SHORT	
JOB/PIECE NO. 33216(04)		SHEET NO. T002		DEPARTMENT OF TRANSPORTATION		

REVISIONS		
REV. NO.	DESCRIPTION	DATE



**NORTHBOUND  
INSIDE LANE & SHOULDER**

KEY

	SIGN
	DRUM
	ARROW DISPLAY
	TYPE III BARRICADE
	CHANNELIZER CONE
	TRUCK MOUNTED ATTENUATOR
	WORK AREA

**NOTE 1**  
MAXIMUM SPACING BETWEEN CHANNELIZING DEVICES (FEET) SHALL BE EQUAL TO TWICE THE POSTED SPEED LIMIT (M.P.H.) WITH THE FOLLOWING EXCEPTIONS. SPACING SHALL NOT EXCEED 50 FEET FOR CONES OR TUBE CHANNELIZERS. SPACING SHALL NOT EXCEED 75 FEET FOR CHANNELIZER CONES. SPACING SHALL NOT EXCEED 100 FEET FOR TYPE II BARRICADES, VERTICAL PANELS OR DRUMS.

**NOTE 2**  
MAXIMUM SPACING BETWEEN CHANNELIZING DEVICES (FEET) SHALL BE EQUAL TO THE POSTED SPEED LIMIT (M.P.H.) WITH THE FOLLOWING EXCEPTIONS. SPACING SHALL NOT EXCEED 25 FEET FOR CONES OR TUBE CHANNELIZERS. SPACING SHALL NOT EXCEED 50 FEET FOR TYPE II BARRICADES, VERTICAL PANELS OR DRUMS.

**NOTE 3**  
A MINIMUM OF FIVE (5) CHANNELIZING DEVICES SHALL BE PLACED THROUGH THIS TAPER.

**NOTE 4**  
DOWNSTREAM TAPERS SHALL CONTAIN A MINIMUM OF FOUR (4) CHANNELIZING DEVICES.

**NOTE 5**  
A LONGITUDINAL BUFFER AREA, TO ALLOW WORKERS TIME TO EVACUATE THE WORK AREA, SHOULD BE PROVIDED. FOR GUIDELINES ON SETTING THE LENGTH OF THIS BUFFER, SEE STANDARD DRAWING TCS2-1-(LATEST REVISION). ACTUAL LENGTH SHALL BE DETERMINED BY FIELD CONDITIONS AND THE JUDGEMENT OF THE ENGINEER.

**NOTE 6**  
CONSTRUCTION SPEED LIMIT TO BE DETERMINED BY THE DIVISION ENGINEER.

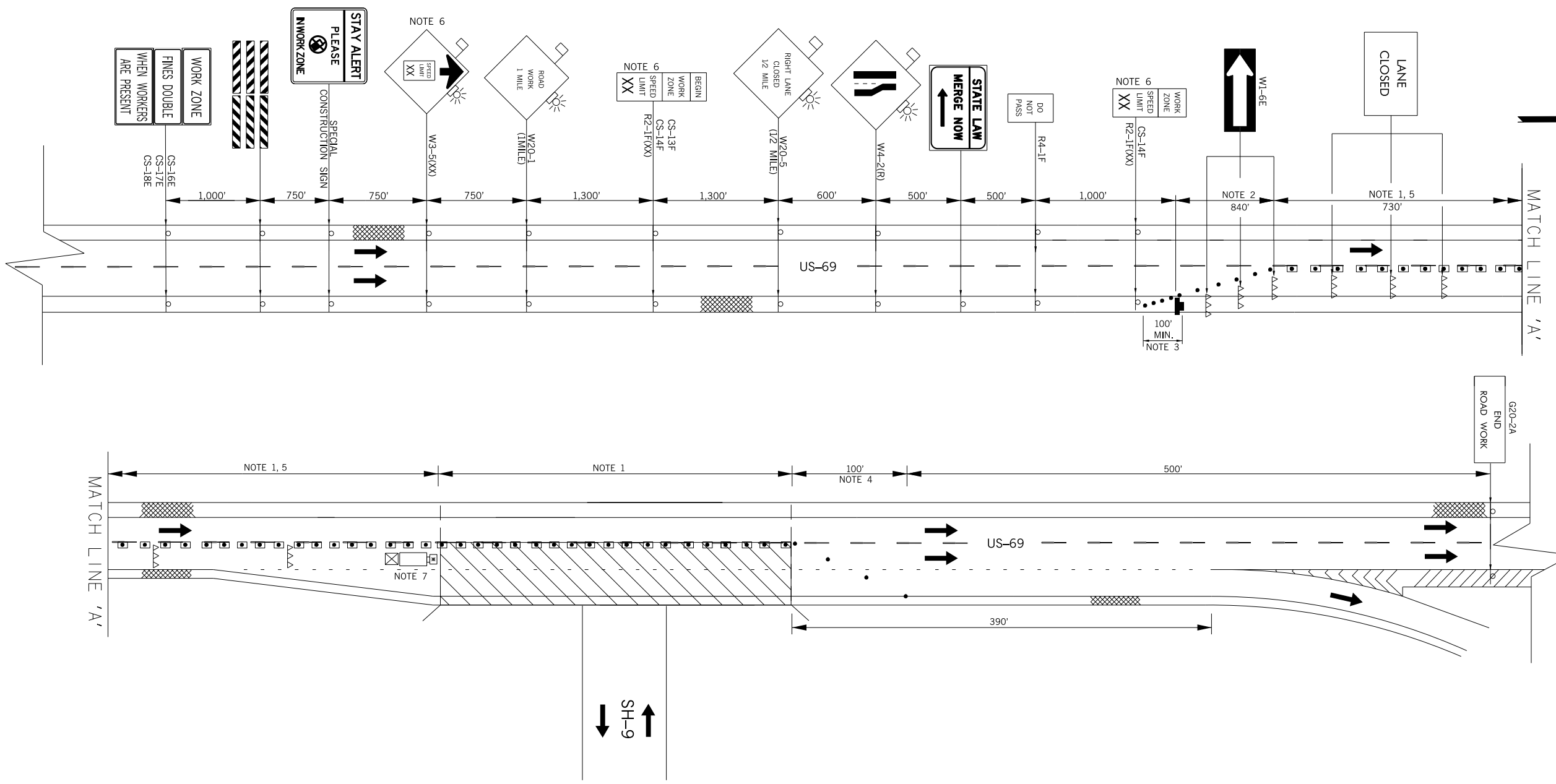
**NOTE 7**  
THE TRUCK MOUNTED ATTENUATOR SHOWN AT THE BEGINNING OF THE WORK AREA SHALL BE IN PLACE WHENEVER WORKERS ARE IN THE WORK AREA. THIS VEHICLE SHALL BE REMOVED FROM THE ROADWAY WHENEVER WORKERS ARE NOT IN THE WORK AREA. THIS VEHICLE SHALL BE EQUIPPED WITH AN ACTUATED FLASHING OR REVOLVING YELLOW LIGHT.

FOR ADDITIONAL INFORMATION ABOUT TAPER LENGTHS AND SPACING OF CHANNELIZING DEVICES, SEE STANDARD DRAWING TCS2-1-(LATEST REVISION).

DIVISION 1		WAGONER COUNTY		DETAIL:	RGN	6/17
TRAFFIC CONTROL DETAIL US-69 OVER SH-9 BRIDGE 'C'				CHECK:	AF	6/17
				ENGINEER:	SEB	6/17
STATE OF OKLAHOMA				GROUP:	WILLIAMS	
				EM:	SHORT	
JOBPIECE NO. 33216(04)		SHEET NO. T003		DEPARTMENT OF TRANSPORTATION		

DRAWING NOT TO SCALE

REVISIONS		
REV. NO.	DESCRIPTION	DATE



**NORTHBOUND  
OUTSIDE LANES & SHOULDER**

- KEY
- SIGN
  - DRUM
  - ARROW DISPLAY
  - TYPE III BARRICADE
  - CHANNELIZER CONE
  - TRUCK MOUNTED ATTENUATOR
  - WORK AREA

**NOTE 1**  
MAXIMUM SPACING BETWEEN CHANNELIZING DEVICES (FEET) SHALL BE EQUAL TO TWICE THE POSTED SPEED LIMIT (M.P.H.) WITH THE FOLLOWING EXCEPTIONS. SPACING SHALL NOT EXCEED 50 FEET FOR CONES OR TUBE CHANNELIZERS. SPACING SHALL NOT EXCEED 75 FEET FOR CHANNELIZER CONES. SPACING SHALL NOT EXCEED 100 FEET FOR TYPE II BARRICADES, VERTICAL PANELS OR DRUMS.

**NOTE 2**  
MAXIMUM SPACING BETWEEN CHANNELIZING DEVICES (FEET) SHALL BE EQUAL TO THE POSTED SPEED LIMIT (M.P.H.) WITH THE FOLLOWING EXCEPTIONS. SPACING SHALL NOT EXCEED 25 FEET FOR CONES OR TUBE CHANNELIZERS. SPACING SHALL NOT EXCEED 50 FEET FOR TYPE II BARRICADES, VERTICAL PANELS OR DRUMS.

**NOTE 3**  
A MINIMUM OF FIVE (5) CHANNELIZING DEVICES SHALL BE PLACED THROUGH THIS TAPER.

**NOTE 4**  
DOWNSTREAM TAPERS SHALL CONTAIN A MINIMUM OF FOUR (4) CHANNELIZING DEVICES.

**NOTE 5**  
A LONGITUDINAL BUFFER AREA, TO ALLOW WORKERS TIME TO EVACUATE THE WORK AREA, SHOULD BE PROVIDED. FOR GUIDELINES ON SETTING THE LENGTH OF THIS BUFFER, SEE STANDARD DRAWING TCS2-1-(LATEST REVISION). ACTUAL LENGTH SHALL BE DETERMINED BY FIELD CONDITIONS AND THE JUDGEMENT OF THE ENGINEER.

**NOTE 6**  
CONSTRUCTION SPEED LIMIT TO BE DETERMINED BY THE DIVISION ENGINEER.

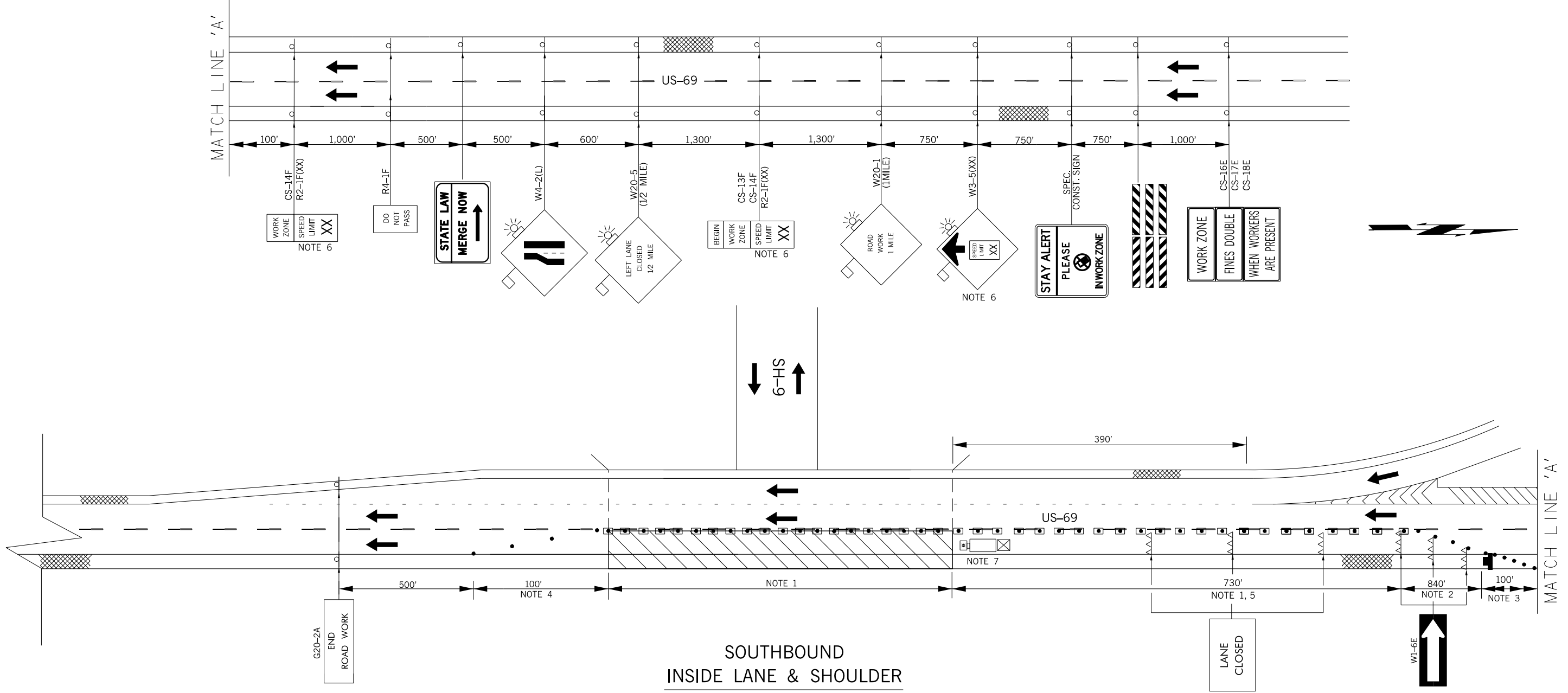
**NOTE 7**  
THE TRUCK MOUNTED ATTENUATOR SHOWN AT THE BEGINNING OF THE WORK AREA SHALL BE IN PLACE WHENEVER WORKERS ARE IN THE WORK AREA. THIS VEHICLE SHALL BE REMOVED FROM THE ROADWAY WHENEVER WORKERS ARE NOT IN THE WORK AREA. THIS VEHICLE SHALL BE EQUIPPED WITH AN ACTUATED FLASHING OR REVOLVING YELLOW LIGHT.

FOR ADDITIONAL INFORMATION ABOUT TAPER LENGTHS AND SPACING OF CHANNELIZING DEVICES, SEE STANDARD DRAWING TCS2-1-(LATEST REVISION).

DIVISION 1		WAGONER COUNTY		DETAIL:	RGN	6/17
<b>TRAFFIC CONTROL DETAIL US-69 OVER SH-9 BRIDGE 'C'</b>				CHECK:	AF	6/17
				ENGINEER:	SEB	6/17
STATE OF OKLAHOMA		DEPARTMENT OF TRANSPORTATION		GROUP:	WILLIAMS	EM: SHORT
JOBPIECE NO. 33216(04)		SHEET NO. T004		DRAWING NOT TO SCALE		



REVISIONS		
REV. NO.	DESCRIPTION	DATE



**NOTE 1**  
 MAXIMUM SPACING BETWEEN CHANNELIZING DEVICES (FEET) SHALL BE EQUAL TO TWICE THE POSTED SPEED LIMIT (M.P.H.) WITH THE FOLLOWING EXCEPTIONS. SPACING SHALL NOT EXCEED 50 FEET FOR CONES OR TUBE CHANNELIZERS. SPACING SHALL NOT EXCEED 75 FEET FOR CHANNELIZER CONES. SPACING SHALL NOT EXCEED 100 FEET FOR TYPE II BARRICADES, VERTICAL PANELS OR DRUMS.

**NOTE 2**  
 MAXIMUM SPACING BETWEEN CHANNELIZING DEVICES (FEET) SHALL BE EQUAL TO THE POSTED SPEED LIMIT (M.P.H.) WITH THE FOLLOWING EXCEPTIONS. SPACING SHALL NOT EXCEED 25 FEET FOR CONES OR TUBE CHANNELIZERS. SPACING SHALL NOT EXCEED 50 FEET FOR TYPE II BARRICADES, VERTICAL PANELS OR DRUMS.

**NOTE 3**  
 A MINIMUM OF FIVE (5) CHANNELIZING DEVICES SHALL BE PLACED THROUGH THIS TAPER.

**NOTE 4**  
 DOWNSTREAM TAPERS SHALL CONTAIN A MINIMUM OF FOUR (4) CHANNELIZING DEVICES.

**NOTE 5**  
 A LONGITUDINAL BUFFER AREA, TO ALLOW WORKERS TIME TO EVACUATE THE WORK AREA, SHOULD BE PROVIDED. FOR GUIDELINES ON SETTING THE LENGTH OF THIS BUFFER, SEE STANDARD DRAWING TCS2-1-(LATEST REVISION). ACTUAL LENGTH SHALL BE DETERMINED BY FIELD CONDITIONS AND THE JUDGEMENT OF THE ENGINEER.

**NOTE 6**  
 CONSTRUCTION SPEED LIMIT TO BE DETERMINED BY THE DIVISION ENGINEER.

**NOTE 7**  
 THE TRUCK MOUNTED ATTENUATOR SHOWN AT THE BEGINNING OF THE WORK AREA SHALL BE IN PLACE WHENEVER WORKERS ARE IN THE WORK AREA. THIS VEHICLE SHALL BE REMOVED FROM THE ROADWAY WHENEVER WORKERS ARE NOT IN THE WORK AREA. THIS VEHICLE SHALL BE EQUIPPED WITH AN ACTUATED FLASHING OR REVOLVING YELLOW LIGHT.

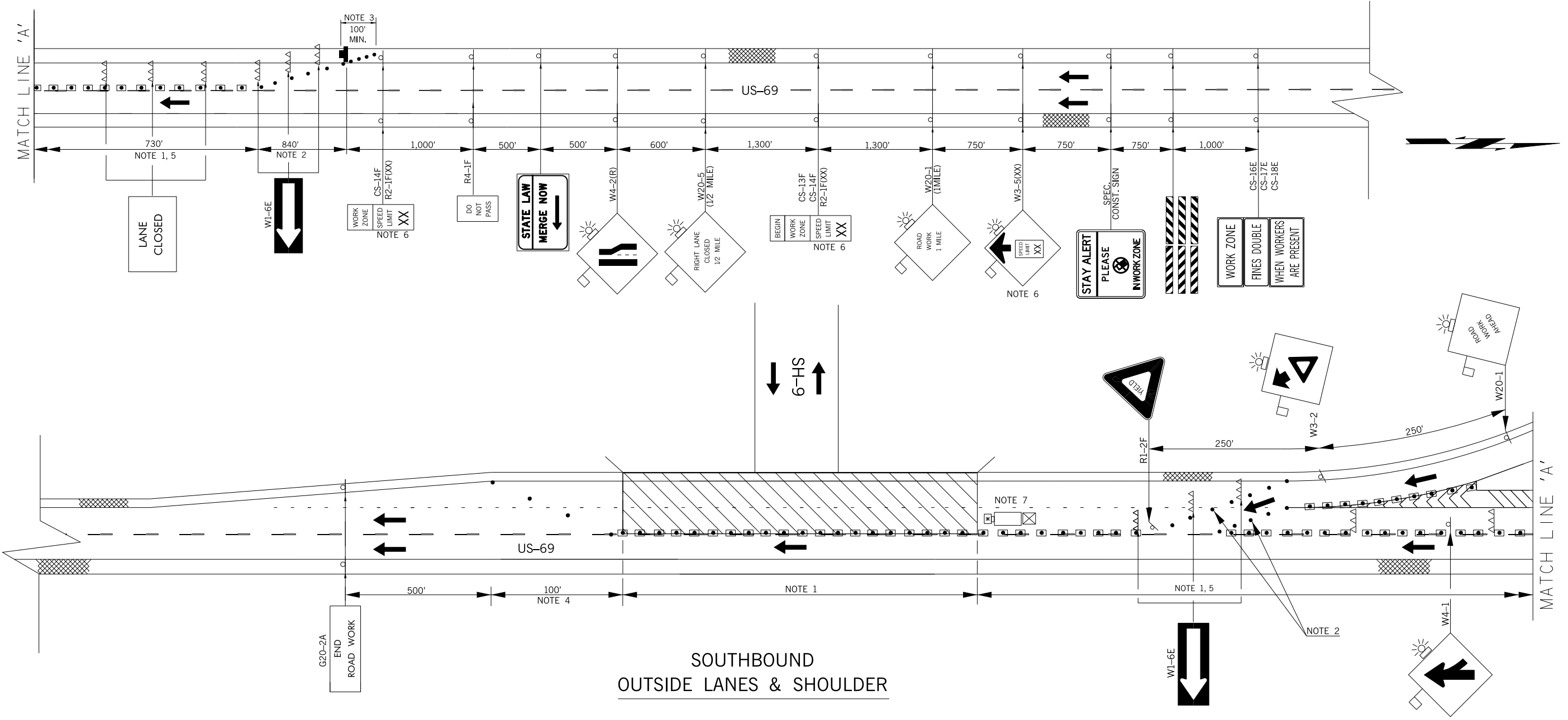
FOR ADDITIONAL INFORMATION ABOUT TAPER LENGTHS AND SPACING OF CHANNELIZING DEVICES, SEE STANDARD DRAWING TCS2-1-(LATEST REVISION).

- KEY**
- SIGN
  - DRUM
  - ARROW DISPLAY
  - TYPE III BARRICADE
  - CHANNELIZER CONE
  - TRUCK MOUNTED ATTENUATOR
  - WORK AREA

DRAWING NOT TO SCALE

DIVISION 1		WAGONER COUNTY		DETAIL:	RGN	6/17
<b>TRAFFIC CONTROL DETAIL</b> US-69 OVER SH-9 BRIDGE 'C'				CHECK:	AF	6/17
				ENGINEER:	SEB	6/17
STATE OF OKLAHOMA		DEPARTMENT OF TRANSPORTATION		GROUP:	WILLIAMS	
JOB/PIECE NO. 33216(04)		SHEET NO. T005				

REVISIONS		
REV. NO.	DESCRIPTION	DATE



**SOUTHBOUND  
OUTSIDE LANES & SHOULDER**

**NOTE 1**  
MAXIMUM SPACING BETWEEN CHANNELIZING DEVICES (FEET) SHALL BE EQUAL TO TWICE THE POSTED SPEED LIMIT (M.P.H.) WITH THE FOLLOWING EXCEPTIONS. SPACING SHALL NOT EXCEED 50 FEET FOR CONES OR TUBE CHANNELIZERS. SPACING SHALL NOT EXCEED 75 FEET FOR CHANNELIZER CONES. SPACING SHALL NOT EXCEED 100 FEET FOR TYPE II BARRICADES, VERTICAL PANELS OR DRUMS.

**NOTE 2**  
MAXIMUM SPACING BETWEEN CHANNELIZING DEVICES (FEET) SHALL BE EQUAL TO THE POSTED SPEED LIMIT (M.P.H.) WITH THE FOLLOWING EXCEPTIONS. SPACING SHALL NOT EXCEED 25 FEET FOR CONES OR TUBE CHANNELIZERS. SPACING SHALL NOT EXCEED 50 FEET FOR TYPE II BARRICADES, VERTICAL PANELS OR DRUMS.

**NOTE 3**  
A MINIMUM OF FIVE (5) CHANNELIZING DEVICES SHALL BE PLACED THROUGH THIS TAPER.

**NOTE 4**  
DOWNSTREAM TAPERS SHALL CONTAIN A MINIMUM OF FOUR (4) CHANNELIZING DEVICES.

**NOTE 5**  
A LONGITUDINAL BUFFER AREA, TO ALLOW WORKERS TIME TO EVACUATE THE WORK AREA, SHOULD BE PROVIDED. FOR GUIDELINES ON SETTING THE LENGTH OF THIS BUFFER, SEE STANDARD DRAWING TCS2-1-(LATEST REVISION). ACTUAL LENGTH SHALL BE DETERMINED BY FIELD CONDITIONS AND THE JUDGEMENT OF THE ENGINEER.

**NOTE 6**  
CONSTRUCTION SPEED LIMIT TO BE DETERMINED BY THE DIVISION ENGINEER.

**NOTE 7**  
THE TRUCK MOUNTED ATTENUATOR SHOWN AT THE BEGINNING OF THE WORK AREA SHALL BE IN PLACE WHENEVER WORKERS ARE IN THE WORK AREA. THIS VEHICLE SHALL BE REMOVED FROM THE ROADWAY WHENEVER WORKERS ARE NOT IN THE WORK AREA. THIS VEHICLE SHALL BE EQUIPPED WITH AN ACTUATED FLASHING OR REVOLVING YELLOW LIGHT.

FOR ADDITIONAL INFORMATION ABOUT TAPER LENGTHS AND SPACING OF CHANNELIZING DEVICES, SEE STANDARD DRAWING TCS2-1-(LATEST REVISION).

- KEY**
- SIGN
  - DRUM
  - ARROW DISPLAY
  - TYPE III BARRICADE
  - CHANNELIZER CONE
  - TRUCK MOUNTED ATTENUATOR
  - WORK AREA

DRAWING NOT TO SCALE

DIVISION 1		WAGONER COUNTY		DETAIL:	RGN	6/17
<b>TRAFFIC CONTROL DETAIL US-69 OVER SH-9 BRIDGE 'C'</b>				CHECK:	AF	6/17
				ENGINEER:	SEB	6/17
STATE OF OKLAHOMA				DEPARTMENT OF TRANSPORTATION	JOB/PIECE NO. 33216(04)	
				GROUP: WILLIAMS	EM: SHORT	
				SHEET NO. T006		